

Recombinant Human ABHD4 Protein, GST-Tagged

Cat. No. ABHD4-078H Lot. No. (See product label)

SPECIFICATION

Product Overview	Human ABHD4 full-length ORF (NP_071343.2, 1 a.a. - 342 a.a.) recombinant protein with GST-tag at N-terminal.
Species	Human
Source	Wheat Germ
Description	ABHD4 (Abhydrolase Domain Containing 4) is a Protein Coding gene. Among its related pathways are Metabolism and Glycerophospholipid biosynthesis. GO annotations related to this gene include hydrolase activity and 1-alkyl-2-acetylglycerophosphocholine esterase activity. An important paralog of this gene is ABHD5.
Molecular Mass	65.2 kDa
AA Sequence	MADDLQSSQGWLSSWLPTWRPTSMSQLKNVEARILQCLQNKFLARYVSLPNQNK IWTVTVSPEQNDRTP LVMVHGFGGVGLWILNMDLSARRTLHTFDLLGFGRSSRP AFPRDPEGADEFVTSIETWRETMGIPSMILLGHSLGGFLATSYSIKYPDRVKHLILVD PWGFPLRPTNPSEIRAPPAWVKAVASVLGRSNPLAVLRVAGPWGPGLVQRF RPDF KRKFADFFEDDTISEYIYHCNAQNPSGETAFKAMMESFGWARRPMLERIH LIRKDVPI TMIYGS DTDWIDTSTGKKVKMQR PDSYVRDMEIKGASHH VYADQPHIFNAVVEEICDS VD
Applications	Enzyme-linked Immunoabsorbent Assay Western Blot (Recombinant protein) Antibody Production

Tel: 1-631-559-9269 1-516-512-3133

Email: info@creative-biomart.com Fax: 1-631-938-8127

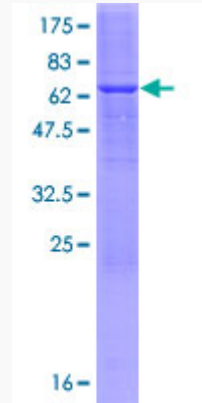
45-1 Ramsey Road, Shirley, NY 11967, USA

	Protein Array
Notes	Best use within three months from the date of receipt of this protein.
Storage	Store at -80 centigrade. Aliquot to avoid repeated freezing and thawing.
Storage Buffer	50 mM Tris-HCl, 10 mM reduced Glutathione, pH=8.0 in the elution buffer.
GENE INFORMATION	
Gene Name	ABHD4 abhydrolase domain containing 4 [Homo sapiens]
Official Symbol	ABHD4
Synonyms	ABHD4; abhydrolase domain containing 4; abhydrolase domain-containing protein 4; FLJ12816; alpha/beta-hydrolase 4; lyso-N-acylphosphatidylethanolamine lipase; ABH4;
Gene ID	63874
mRNA Refseq	NM_022060
Protein Refseq	NP_071343
UniProt ID	Q8TB40

 Tel: 1-631-559-9269 1-516-512-3133

 Email: info@creative-biomart.com  Fax: 1-631-938-8127

 45-1 Ramsey Road, Shirley, NY 11967, USA



12.5% SDS-PAGE Stained with Coomassie Blue.

 Tel: 1-631-559-9269 1-516-512-3133

 Email: info@creative-biomart.com  Fax: 1-631-938-8127

 45-1 Ramsey Road, Shirley, NY 11967, USA