

Recombinant Human ABHD6 Protein, GST-Tagged

Cat. No. ABHD6-082H Lot. No. (See product label)

SPECIFICATION

Product Overview	Human ABHD6 full-length ORF (AAH01698.1, 1 a.a. - 337 a.a.) recombinant protein with GST-tag at N-terminal.
Species	Human
Source	Wheat Germ
Description	ABHD6 (Abhydrolase Domain Containing 6) is a Protein Coding gene. Among its related pathways are Signaling by GPCR and triacylglycerol degradation. GO annotations related to this gene include acylglycerol lipase activity.
Molecular Mass	64.7 kDa
AA Sequence	MDLDVVNMFVIAGGTLAIPILAFVASFLLWPSALIRIYYWYWRRTLGMQVRYVHHEDY QFCYSFRGRPGHKPSILMLHGFSAHKDMWLSVVKFLPKNLHLVCVDMPGHEGTR SSLDDLSDGQVKRIHQFVECLKLNKKPFHLVGTSMGGQVAGVYAAAYPSDVSSLCL VCPAGLQYSTDNQFVQRLKELQGSAAVEKIPLIPSTPEEMSEMLQLCSYVRFKVPQQ ILQGLVDVRIPHNNFYRKLFLFLEIVSEKSRYSLSHQNMDKIKVPTQIIWGKQDQVLDVSG ADMLAKSIANCQVELLENCGHSVVMERPRKTAKLIIDFLASVHNTDNNKKLD
Applications	Enzyme-linked Immunoabsorbent Assay Western Blot (Recombinant protein) Antibody Production Protein Array

 Tel: 1-631-559-9269 1-516-512-3133

 Email: info@creative-biomart.com  Fax: 1-631-938-8127

 45-1 Ramsey Road, Shirley, NY 11967, USA

Notes	Best use within three months from the date of receipt of this protein.
Storage	Store at -80 centigrade. Aliquot to avoid repeated freezing and thawing.
Storage Buffer	50 mM Tris-HCl, 10 mM reduced Glutathione, pH=8.0 in the elution buffer.

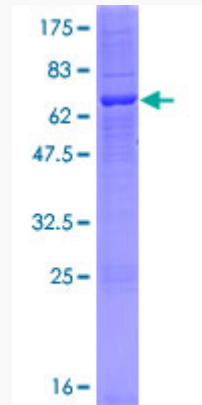
GENE INFORMATION

Gene Name	ABHD6 abhydrolase domain containing 6 [Homo sapiens]
Official Symbol	ABHD6
Synonyms	Abhydrolase Domain Containing 6; EC 3.1.1.23; Abhydrolase Domain-Containing Protein 6; 2-Arachidonoylglycerol Hydrolase
Gene ID	57406
mRNA Refseq	NM_020676
Protein Refseq	NP_065727
MIM	616966
UniProt ID	Q9BV23

 Tel: 1-631-559-9269 1-516-512-3133

 Email: info@creative-biomart.com  Fax: 1-631-938-8127

 45-1 Ramsey Road, Shirley, NY 11967, USA



12.5% SDS-PAGE Stained with Coomassie Blue.

 Tel: 1-631-559-9269 1-516-512-3133

 Email: info@creative-biomart.com  Fax: 1-631-938-8127

 45-1 Ramsey Road, Shirley, NY 11967, USA