

Recombinant Human ABHD6 Protein, His-tagged

Cat. No. ABHD6-14H Lot. No. (See product label)

SPECIFICATION

Product Overview	Recombinant Human ABHD6 Protein (Trp30-Asp337) with N-His tag was expressed in E. coli.
Species	Human
Source	E.coli
ProteinLength	Trp30-Asp337
Description	Enables acylglycerol lipase activity. Involved in acylglycerol catabolic process. Predicted to be located in late endosome membrane and lysosomal membrane. Predicted to be integral component of membrane. Predicted to be part of AMPA glutamate receptor complex. Predicted to be active in GABA-ergic synapse; glutamatergic synapse; and mitochondrion. Predicted to be integral component of postsynaptic membrane.
Form	Freeze-dried powder
Molecular Mass	Predicted Molecular Mass: 38.7 kDa Accurate Molecular Mass: 38 kDa
Purity	> 80%
Applications	Positive Control; Immunogen; SDS-PAGE; WB.

 Tel: 1-631-559-9269 1-516-512-3133

 Email: info@creative-biomart.com  Fax: 1-631-938-8127

 45-1 Ramsey Road, Shirley, NY 11967, USA

Stability	The thermal stability is described by the loss rate. The loss rate was determined by accelerated thermal degradation test, that is, incubate the protein at 37 centigrade for 48h, and no obvious degradation and precipitation were observed. The loss rate is less than 5% within the expiration date under appropriate storage condition.
Storage	Avoid repeated freeze/thaw cycles. Store at 2-8 centigrade for one month. Aliquot and store at -80 centigrade for 12 months.
Storage Buffer	20mM Tris, 150mM NaCl, pH8.0, containing 1mM EDTA, 1mM DTT, 0.01% SKL, 5% Trehalose and Proclin300.
Reconstitution	Reconstitute in sterile water to a concentration of 0.1-1.0 mg/mL. Do not vortex.

GENE INFORMATION

Gene Name	ABHD6 abhydrolase domain containing 6, acylglycerol lipase [Homo sapiens (human)]
Official Symbol	ABHD6
Synonyms	ABHD6; abhydrolase domain containing 6, acylglycerol lipase; monoacylglycerol lipase ABHD6; 2-arachidonoylglycerol hydrolase; abhydrolase domain-containing protein 6; lipase protein; EC 3.1.1.23
Gene ID	57406
mRNA Refseq	NM_020676
Protein Refseq	NP_065727
MIM	616966

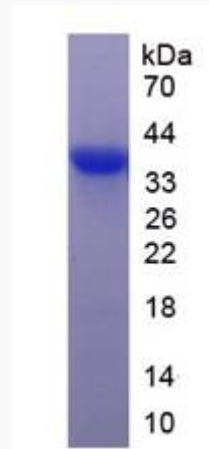
 Tel: 1-631-559-9269 1-516-512-3133

 Email: info@creative-biomart.com  Fax: 1-631-938-8127

 45-1 Ramsey Road, Shirley, NY 11967, USA

UniProt ID

Q9BV23



 Tel: 1-631-559-9269 1-516-512-3133

 Email: info@creative-biomart.com  Fax: 1-631-938-8127

 45-1 Ramsey Road, Shirley, NY 11967, USA