


Recombinant Full Length Human ABHD6 Protein, C-Flag-tagged

Cat. No. ABHD6-475HFL **Lot. No.** (See product label)

SPECIFICATION

Product Overview	Recombinant Full Length Human ABHD6 Protein, fused to Flag-tag at C-terminus, was expressed in Mammalian cells.
Species	Human
Source	Mammalian Cells
Description	Lipase that preferentially hydrolysis medium-chain saturated monoacylglycerols including 2-arachidonoylglycerol. Through 2-arachidonoylglycerol degradation may regulate endocannabinoid signaling pathways (By similarity). Also has a lysophosphatidyl lipase activity with a preference for lysophosphatidylglycerol among other lysophospholipids (By similarity). Also able to degrade bis(monoacylglycerol)phosphate (BMP) and constitutes the major enzyme for BMP catabolism. BMP, also known as lysobisphosphatidic acid, is enriched in late endosomes and lysosomes and plays a key role in the formation of intraluminal vesicles and in lipid sorting.
Form	25 mM Tris HCl, pH 7.3, 100 mM glycine, 10% glycerol.
Molecular Mass	38.2 kDa
AA Sequence	MDLDVVNMFVIAGGTLAIPILAFVASFLLWPSALIRIYYWYWRRTLGMQVRYVHHEDY QFCYSFRGRPGH KPSILMLHGFSAHKDMWLSVVKFLPKNLHLVCVDMPGHEGTTTR SSLDDLSIDGQVKRIHQFVECLKLNKK PFHLVGTSMGGQVAGVYAAYYPSDVSSLC

 Tel: 1-631-559-9269 1-516-512-3133

 Email: info@creative-biomart.com  Fax: 1-631-938-8127

 45-1 Ramsey Road, Shirley, NY 11967, USA

LVCPAGLQYSTDNQFVQRLKELQGSAAVEKIPLIPSTPEEM SEMLQLCSYVRFKVP
 QQILQGLVDVRIPHNNFYRKLFLFLEIVSEKSRYSLHQNMMDKIKVPTQIIWKGKQDQV
 LDVSGADMLAKSIANCQVELLENCGHSSVVMERPRKTAKLIIDFLASVHNTDNNKKLD
 TRTRPLEQKLISEEDLAANDILDYKDDDDKV

Purity	> 80% as determined by SDS-PAGE and Coomassie blue staining.
Stability	Stable for 12 months from the date of receipt of the product under proper storage and handling conditions. Avoid repeated freeze-thaw cycles.
Storage	Store at -80 centigrade.
Concentration	>50 ug/mL as determined by microplate BCA method.
Preparation	Recombinant protein was captured through anti-DDK affinity column followed by conventional chromatography steps.
Protein Families	Transmembrane
Full Length	Full L.

GENE INFORMATION

Gene Name	ABHD6 abhydrolase domain containing 6, acylglycerol lipase [Homo sapiens (human)]
Official Symbol	ABHD6
Synonyms	abhydrolase domain containing 6; lipase protein
Gene ID	57406

 Tel: 1-631-559-9269 1-516-512-3133

 Email: info@creative-biomart.com  Fax: 1-631-938-8127

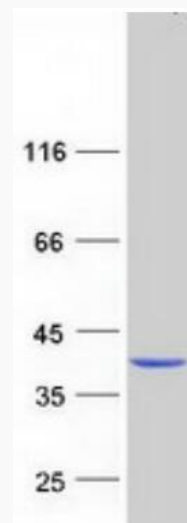
 45-1 Ramsey Road, Shirley, NY 11967, USA

mRNA Refseq [NM_020676.7](#)


Protein Refseq [NP_065727.4](#)

MIM [616966](#)


UniProt ID [Q9BV23](#)



Coomassie blue staining of purified ABHD6 protein.

 Tel: 1-631-559-9269 1-516-512-3133

 Email: info@creative-biomart.com  Fax: 1-631-938-8127

 45-1 Ramsey Road, Shirley, NY 11967, USA