

## Recombinant Human ABHD6 protein, His-tagged

Cat. No. ABHD6-6843H Lot. No. (See product label)

### SPECIFICATION

**Product Overview** Recombinant Human ABHD6 protein(29-337 aa), fused with N-terminal His tag, was expressed in E. coli.

**Species** Human

**Source** E.coli

**ProteinLength** 29-337 aa

**Tag** N-His

**Form** The purified protein was Lyophilized from sterile PBS (58mM Na<sub>2</sub>HPO<sub>4</sub>, 17mM NaH<sub>2</sub>PO<sub>4</sub>, 68mM NaCl, pH7.4). 5 % trehalose and 5 % mannitol are added as protectant before lyophilization.

**Purity** 85%, by SDS-PAGE with Coomassie Brilliant Blue staining.

**Storage** Short-term storage: Store at 2-8°C for (1-2 weeks). Long-term storage: Aliquot and store at -20°C to -80°C for up to 3 months, reconstitution with sterile water and addition of an equal volume of glycerol. Avoid repeat freeze-thaw cycles.

**Reconstitution** Reconstitute at 0.25 µg/µl in 200 µl sterile water for short-term storage. After reconstitution with sterile water, if glycerol has no effect on subsequent experiments, it is recommended to add an equal volume of glycerol for long-term storage.

 Tel: 1-631-559-9269 1-516-512-3133

 Email: [info@creative-biomart.com](mailto:info@creative-biomart.com)  Fax: 1-631-938-8127

 45-1 Ramsey Road, Shirley, NY 11967, USA

**AA Sequence**

LWPSALIRIYYWYWRRTLGMQVRYVHHEDYQFCYSFRGRPGHKPSILMLHGFSAHK  
DMWLSVVKFLPKNLHLVCVDMPGHEGTRSSLDDLSIDGQVKRIHQFVECLKLNKK  
PFHLVGTSMGGQVAGVYAAYYPSDVSSLCLVCPAGLQYSTDNQFVQRLKELQGSA  
AVEKIPLIPSTPEEMSEMLQLCSYVRFKVPQQILQGLVDVRIPHNNFYRKLFLFLEIVSEK  
SRYSLHQNMMDKIKVPTQIIWKGKQDQVLDVSGADMLAKSIANCQVELLENCGHVVM  
ERPRKTAKLIIDFLASVHNTDNNKKLD

**GENE INFORMATION**

<b>Gene Name</b>	ABHD6 abhydrolase domain containing 6 [ Homo sapiens ]
<b>Official Symbol</b>	ABHD6
<b>Gene ID</b>	57406
<b>mRNA Refseq</b>	NM_020676.5
<b>Protein Refseq</b>	NP_065727.4
<b>UniProt ID</b>	Q9BV23

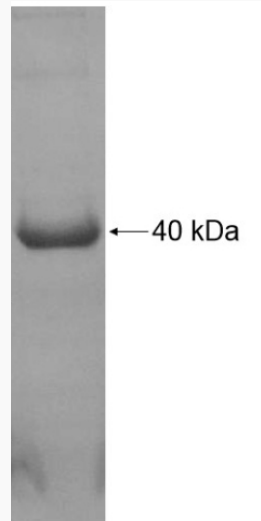
 Tel: 1-631-559-9269 1-516-512-3133

 Email: [info@creative-biomart.com](mailto:info@creative-biomart.com)  Fax: 1-631-938-8127

 45-1 Ramsey Road, Shirley, NY 11967, USA



SDS-PAGE



Tel: 1-631-559-9269 1-516-512-3133

Email: [info@creative-biomart.com](mailto:info@creative-biomart.com) Fax: 1-631-938-8127

45-1 Ramsey Road, Shirley, NY 11967, USA