

Recombinant Human ABHD8 Protein, GST-Tagged

Cat. No. ABHD8-084H **Lot. No.** (See product label)

SPECIFICATION

Product Overview	Human ABHD8 full-length ORF (AAH07895.1, 1 a.a. - 439 a.a.) recombinant protein with GST-tag at N-terminal.
Species	Human
Source	Wheat Germ
Description	This gene is upstream of, and in a head-to-head orientation with the gene for the mitochondrial ribosomal protein L34. The predicted protein contains alpha/beta hydrolase fold and secretory lipase domains. [provided by RefSeq, Jul 2008]
Molecular Mass	73.7 kDa
AA Sequence	<p>MLTGVTDGIFCCLLGTTPNAVGPLESVESSDGYTFVEVKPGRVLRVKHAGPAPAAA PPPSSASSDAAQGDLSGLVRCQRRITVYRNGRLLVENLGRAPRADLLHGQNGSG EPPAALEVELADPAGSDGRLAPGSAGSGSGSGSGGRRRRARRPKRTIHIDCEKRIT SCKGAQADVVLFFIHGVGGS LAIWKEQLDFFVRLGYEVVAPDLAGHGASSAPQVAA AYTFYALAEDMRAIFKRYAKKRNVLIGHSYGVSFCTFLAHEY PDLVHKVIMINGGGPT ALEPSFCSIFNMPTCVLHCLSPCLAWSFLKAGFARQGAKEKQLLKEGNFNVSSFVL RAMMSGQYWPEGDEVYHAELTVPVLLVHGMHDKFVPVEEDQRMAEILLLAFLKLID EGSMMVMLECPETVNTLLHEFLLWEPEPSPKALPEPLPAPPEDKK</p>
Applications	Enzyme-linked Immunoabsorbent Assay Western Blot (Recombinant protein) Antibody Production

 Tel: 1-631-559-9269 1-516-512-3133

 Email: info@creative-biomart.com  Fax: 1-631-938-8127

 45-1 Ramsey Road, Shirley, NY 11967, USA

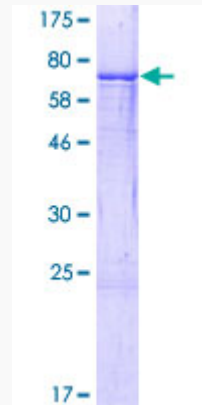
Protein Array

Notes	Best use within three months from the date of receipt of this protein.
Storage	Store at -80 centigrade. Aliquot to avoid repeated freezing and thawing.
Storage Buffer	50 mM Tris-HCl, 10 mM reduced Glutathione, pH=8.0 in the elution buffer.

GENE INFORMATION

Gene Name	ABHD8 abhydrolase domain containing 8 [Homo sapiens]
Official Symbol	ABHD8
Synonyms	ABHD8; abhydrolase domain containing 8; abhydrolase domain-containing protein 8; FLJ11743; MGC2512; MGC14280;
Gene ID	79575
mRNA Refseq	NM_024527
Protein Refseq	NP_078803
UniProt ID	Q96I13

 Tel: 1-631-559-9269 1-516-512-3133 Email: info@creative-biomart.com  Fax: 1-631-938-8127 45-1 Ramsey Road, Shirley, NY 11967, USA



12.5% SDS-PAGE Stained with Coomassie Blue.

 Tel: 1-631-559-9269 1-516-512-3133

 Email: info@creative-biomart.com  Fax: 1-631-938-8127

 45-1 Ramsey Road, Shirley, NY 11967, USA