

Recombinant Human ABHD8 Protein, Myc/DDK-tagged, C13 and N15-labeled

Cat. No. ABHD8-3749H Lot. No. (See product label)

SPECIFICATION

Product Overview	ABHD8 MS Standard C13 and N15-labeled recombinant protein (NP_078803) with a C-terminal MYC/DDK tag, was expressed in HEK293 cells.
Species	Human
Source	HEK293
Description	This gene is upstream of, and in a head-to-head orientation with the gene for the mitochondrial ribosomal protein L34. The predicted protein contains alpha/beta hydrolase fold and secretory lipase domains.
Molecular Mass	47.3 kDa
AA Sequence	<p>MLTGVTDGIFCCLLGTTPNAVGPLESVSSDGYTFVEVKPGRVLRVKHAGPAPAAA PPPPSSASSDAAQGDLSGLVRCQRRITVYRNGRLLVENLGRAPRADLLHGQNGSG EPPAALEVELADPAGSDGRLAPGSAGSGSGSGSGGRRRRARRPKRTIHIDCEKRIT SCKGAQADVVLFFIHGVGGLAIWKEQLDFFVRLGYEVVAPDLAGHGASSAPQVAA AYTFYALAEDMRAIFKRYAKKRNVLIGHSYGVSFCTFLAHEYDPLVHKVIMINGGGPT ALEPSFCSIFNMPTCVLHCLSPCLAWSFLKAGFARQGAKEKQLLKEGNAFNVSSFVL RAMMSGQYWPEGDEVYHAELTPVLLVHGMHDKFVPVEEDQRMAEILLLAFKLID EGSHMVMLECPETVNTLLHEFLLWEPEPSPKALPEPLPAPPEDKKTRTRPLEQKLIS EEDLAANDILDYKDDDDKV</p>
Purity	> 80% as determined by SDS-PAGE and Coomassie blue staining

 Tel: 1-631-559-9269 1-516-512-3133

 Email: info@creative-biomart.com  Fax: 1-631-938-8127

 45-1 Ramsey Road, Shirley, NY 11967, USA

Stability	Stable for 3 months from receipt of products under proper storage and handling conditions.
Storage	Store at -80 centigrade. Avoid repeated freeze-thaw cycles.
Concentration	50 µg/mL as determined by BCA
Storage Buffer	100 mM glycine, 25 mM Tris-HCl, pH 7.3.

GENE INFORMATION

Gene Name	ABHD8 abhydrolase domain containing 8 [Homo sapiens (human)]
Official Symbol	ABHD8
Synonyms	ABHD8; abhydrolase domain containing 8; abhydrolase domain-containing protein 8; FLJ11743; MGC2512; MGC14280;
Gene ID	79575
mRNA Refseq	NM_024527
Protein Refseq	NP_078803
UniProt ID	Q96I13

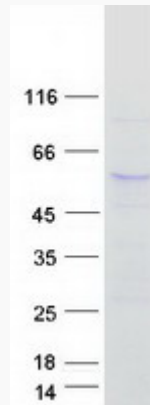
 Tel: 1-631-559-9269 1-516-512-3133

 Email: info@creative-biomart.com  Fax: 1-631-938-8127

 45-1 Ramsey Road, Shirley, NY 11967, USA



SDS-PAGE



Tel: 1-631-559-9269 1-516-512-3133

Email: info@creative-biomart.com Fax: 1-631-938-8127

45-1 Ramsey Road, Shirley, NY 11967, USA