

# Recombinant Human ABI3 Protein, Myc/DDK-tagged, C13 and N15-labeled

**Cat. No.** ABI3-483H    **Lot. No.** (See product label)

## SPECIFICATION

<b>Product Overview</b>	ABI3 MS Standard C13 and N15-labeled recombinant protein (NP_057512) with a C-terminal MYC/DDK tag, was expressed in HEK293 cells.
<b>Species</b>	Human
<b>Source</b>	HEK293
<b>Description</b>	This gene encodes a member of an adaptor protein family. Members of this family encode proteins containing a homeobox homology domain, proline rich region and Src-homology 3 (SH3) domain, and are components of the Abi/WAVE complex which regulates actin polymerization. The encoded protein inhibits ectopic metastasis of tumor cells as well as cell migration. This may be accomplished through interaction with p21-activated kinase. Alternative splicing results in multiple transcript variants.
<b>Molecular Mass</b>	39 kDa
<b>AA Sequence</b>	<p>MAELQQLQFEIPTGREALRGNHSALLRVADYCEDNYVQATDKRKALEETMAFTTQ          ALASVAYQVGNLAGHTLRMLDLQGAALRQVEARVSTLQGMVNMHMEKVARREIGT          LATVQRLPPGQKVIAPENLPPLTPYCRRPLNFGCLDDIGHGKDLSTQLSRTGTLRSK          SIKAPATPASATLGRPPRIPEPVHLPVVPDGRLSAASSASSLASAGSAEGVGGAPTP          KGQAAPPAPPLPSSLDPPPPPAAVEVFQRPPMLEELSPPPPDEELPLPLDLPPPPPL          DGDELGLPPPPPGFGPDEPSWVPASYLEKVVTLYPYTSQKDNELSFSEGTVICVTR          RYSDGWCEGVSSEGTGFFPGNYVEPSCTRTRPLEQKLISEEDLAANDILDYKDDDD</p>

 Tel: 1-631-559-9269    1-516-512-3133

 Email: [info@creative-biomart.com](mailto:info@creative-biomart.com)     Fax: 1-631-938-8127

 45-1 Ramsey Road, Shirley, NY 11967, USA

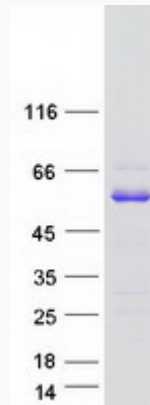
	KV
<b>Purity</b>	> 80% as determined by SDS-PAGE and Coomassie blue staining
<b>Stability</b>	Stable for 3 months from receipt of products under proper storage and handling conditions.
<b>Storage</b>	Store at -80 centigrade. Avoid repeated freeze-thaw cycles.
<b>Concentration</b>	50 µg/mL as determined by BCA
<b>Storage Buffer</b>	100 mM glycine, 25 mM Tris-HCl, pH 7.3.
<b>GENE INFORMATION</b>	
<b>Gene Name</b>	ABI3 ABI family member 3 [ Homo sapiens (human) ]
<b>Official Symbol</b>	ABI3
<b>Synonyms</b>	ABI3; ABI family, member 3; ABI gene family member 3; NESH; SSH3BP3; ABI gene family, member 3; new molecule including SH3;
<b>Gene ID</b>	51225
<b>mRNA Refseq</b>	NM_016428
<b>Protein Refseq</b>	NP_057512
<b>MIM</b>	606363
<b>UniProt ID</b>	Q9P2A4

 Tel: 1-631-559-9269 1-516-512-3133

 Email: [info@creative-biomart.com](mailto:info@creative-biomart.com)  Fax: 1-631-938-8127

 45-1 Ramsey Road, Shirley, NY 11967, USA

**SDS-PAGE**



 Tel: 1-631-559-9269 1-516-512-3133

 Email: [info@creative-biomart.com](mailto:info@creative-biomart.com)  Fax: 1-631-938-8127

 45-1 Ramsey Road, Shirley, NY 11967, USA