

Recombinant Human ABL1 Protein, His tagged

Cat. No. ABL1-001H Lot. No. (See product label)

SPECIFICATION

Species Human

Source Insect Cells

ProteinLength 941-1140 aa

Description

This gene is a protooncogene that encodes a protein tyrosine kinase involved in a variety of cellular processes, including cell division, adhesion, differentiation, and response to stress. The activity of the protein is negatively regulated by its SH3 domain, whereby deletion of the region encoding this domain results in an oncogene. The ubiquitously expressed protein has DNA-binding activity that is regulated by CDC2-mediated phosphorylation, suggesting a cell cycle function. This gene has been found fused to a variety of translocation partner genes in various leukemias, most notably the t(9;22) translocation that results in a fusion with the 5' end of the breakpoint cluster region gene (BCR; MIM:151410). Alternative splicing of this gene results in two transcript variants, which contain alternative first exons that are spliced to the remaining common exons.

Molecular Mass 22 kDa

AA Sequence

MAAGEAVLGAKTKATSLVDAVNSDAAKPSQPGEGLKPKVLPATPKPQSAKPSGTP
SPAPVPSTLPSASSALAGDQPSSTAFIPLISTRVSLRKTRQPPERIASGAIKGVVLD
TEALCLAISRNSEQMASHSAVLEAGKNLYTFCVSYVDSIQQMRNKFAFREAINKLEN
NLRELQICPATAGSGPAATQDFSKLLSSVHHHHHHHH

 Tel: 1-631-559-9269 1-516-512-3133

 Email: info@creative-biomart.com  Fax: 1-631-938-8127

 45-1 Ramsey Road, Shirley, NY 11967, USA

Endotoxin	< 1 EU/μg by LAL
Purity	> 80% by SDS-PAGE
Storage	Store it under sterile conditions at -20 to -80 centigrade. It is recommended that the protein be aliquoted for optimal storage. Avoid repeated freeze-thaw cycles.
Storage Buffer	Sterile PBS, pH 7.4, 5% Trehalose, 0.1% SKL
Concentration	1 mg/mL by BCA

GENE INFORMATION

Gene Name	ABL1 ABL proto-oncogene 1, non-receptor tyrosine kinase [Homo sapiens (human)]
Official Symbol	ABL1
Synonyms	ABL1; c-abl oncogene 1, non-receptor tyrosine kinase; ABL, c abl oncogene 1, receptor tyrosine kinase , v abl Abelson murine leukemia viral oncogene homolog 1; tyrosine-protein kinase ABL1; c ABL; JTK7; p150; proto-oncogene c-Abl; bcr/c-abl oncogene protein; Abelson tyrosine-protein kinase 1; c-abl oncogene 1, receptor tyrosine kinase; proto-oncogene tyrosine-protein kinase ABL1; v-abl Abelson murine leukemia viral oncogene homolog 1; ABL; c-ABL; v-abl; bcr/abl
Gene ID	25
mRNA Refseq	NM_005157
Protein Refseq	NP_005148
MIM	189980

 Tel: 1-631-559-9269 1-516-512-3133

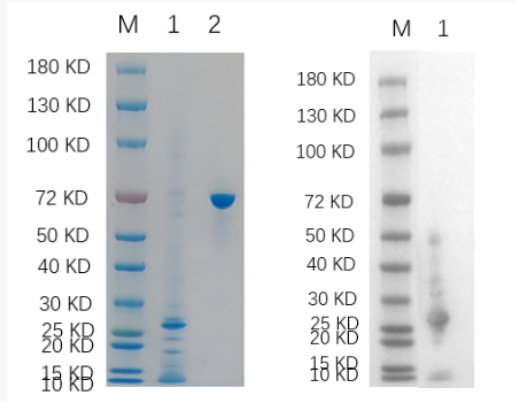
 Email: info@creative-biomart.com  Fax: 1-631-938-8127

 45-1 Ramsey Road, Shirley, NY 11967, USA

UniProt ID

P00519

Reducing 4%-20%
SDS-PAGE (CBB
stained) and WB
(Anti-His Mouse
Monoclonal
Antibody) analysis
profiles of purified
ABL1



1. ABL1 2. BSA

 Tel: 1-631-559-9269 1-516-512-3133

 Email: info@creative-biomart.com  Fax: 1-631-938-8127

 45-1 Ramsey Road, Shirley, NY 11967, USA