

Active Recombinant Human ABL1 Protein, GST-His-Tagged

Cat. No. ABL1-097H Lot. No. (See product label)

SPECIFICATION

Product Overview	Human ABL1 (NM_005157.3, 118 a.a. - 535 a.a.) partial recombinant protein with GST-His tag was expressed in Sf9 cells.
Species	Human
Source	Insect Cells
ProteinLength	118-535 a.a.
Description	<p>This gene is a protooncogene that encodes a protein tyrosine kinase involved in a variety of cellular processes, including cell division, adhesion, differentiation, and response to stress. The activity of the protein is negatively regulated by its SH3 domain, whereby deletion of the region encoding this domain results in an oncogene. The ubiquitously expressed protein has DNA-binding activity that is regulated by CDC2-mediated phosphorylation, suggesting a cell cycle function. This gene has been found fused to a variety of translocation partner genes in various leukemias, most notably the t(9;22) translocation that results in a fusion with the 5' end of the breakpoint cluster region gene (BCR; MIM:151410). Alternative splicing of this gene results in two transcript variants, which contain alternative first exons that are spliced to the remaining common exons. [provided by RefSeq, Aug 2014]</p>
Form	Liquid
Bio-activity	75 pmol/ug x min

 Tel: 1-631-559-9269 1-516-512-3133

 Email: info@creative-biomart.com  Fax: 1-631-938-8127

 45-1 Ramsey Road, Shirley, NY 11967, USA

Molecular Mass	76.167 kDa
AA Sequence	PVNSLEKHSWYHGPVSRNAAEYLLSSGINGSFLVRESESSPGQRSISLRYEGRVYH YRINTASDGKLYVSSESFRNTLAELVHHHSTVADGLITTLHYPAPKRKNKPTVYGVSPN YDKWEMERTDITMKHKLGGGQYGEVYEGVWKKYSLTVAVKTLKEDTMEVEEFLKE AAVMKEIKHPNLVQLLGVCTREPPFYIITEFMTYGNLLDYLRECNRQEVNAVLLYMA TQISSAMEYLEKKNFIHRDLAARNCLVGENHLVKVADFGLSRLMTGDTYTAHAGAKF PIKWTAPESLAYNKFSIKSDVWAFGVLLWEIATYGMSPYPGIDLSQVYELLEKDYRM ERPEGCPEKVYELMRACWQWNPSDRPSFAEIHQAFETMFQESSISDEVEKELGKQ GVRGAVSTLLQAPELPTKTRTS
Applications	Functional Study SDS-PAGE
Storage	Store at -80 centigrade. Aliquot to avoid repeated freezing and thawing
Concentration	0.414 µg/µL
Storage Buffer	In 50 mM Hepes, 100 mM NaCl, pH 7.5. (5 mM DTT, 15 mM reduced glutathione, 20% glycerol)

GENE INFORMATION

Gene Name	ABL1 c-abl oncogene 1, non-receptor tyrosine kinase [Homo sapiens]
Official Symbol	ABL1
Synonyms	ABL1; c-abl oncogene 1, non-receptor tyrosine kinase; ABL, c abl oncogene 1, receptor tyrosine kinase , v abl Abelson murine leukemia viral oncogene homolog 1; tyrosine-protein kinase ABL1; c ABL; JTK7; p150; proto-oncogene c-Abl; bcr/c-abl oncogene protein; Abelson tyrosine-protein kinase 1; c-abl oncogene 1, receptor

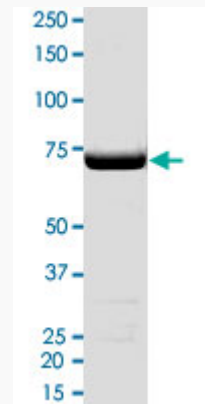
 Tel: 1-631-559-9269 1-516-512-3133

 Email: info@creative-biomart.com  Fax: 1-631-938-8127

 45-1 Ramsey Road, Shirley, NY 11967, USA

tyrosine kinase; proto-oncogene tyrosine-protein kinase ABL1; v-abl Abelson murine leukemia viral oncogene homolog 1; ABL; c-ABL; v-abl; bcr/abl;

Gene ID	25
mRNA Refseq	NM_005157
Protein Refseq	NP_005148
MIM	189980
UniProt ID	P00519



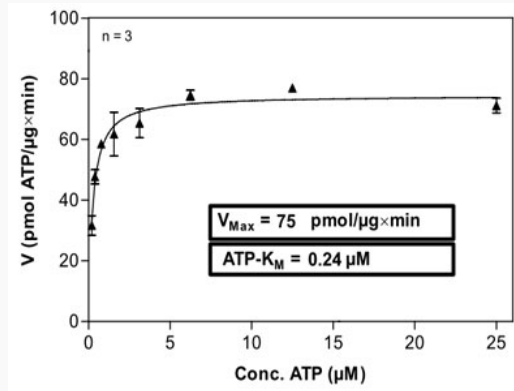
2 ug/lane SDS-PAGE Stained with Coomassie Blue

Tel: 1-631-559-9269 1-516-512-3133

Email: info@creative-biomart.com Fax: 1-631-938-8127

45-1 Ramsey Road, Shirley, NY 11967, USA

Result of activity analysis



 Tel: 1-631-559-9269 1-516-512-3133

 Email: info@creative-biomart.com  Fax: 1-631-938-8127

 45-1 Ramsey Road, Shirley, NY 11967, USA