

Recombinant Human ABL1 Protein, GST-Tagged

Cat. No. ABL1-098H **Lot. No.** (See product label)

SPECIFICATION

Product Overview	Human ABL1 partial ORF (NP_005148.2, 931 a.a. - 1030 a.a.) recombinant protein with GST tag at N-terminal.
Species	Human
Source	Wheat Germ
ProteinLength	931-1030 a.a.
Description	<p>This gene is a protooncogene that encodes a protein tyrosine kinase involved in a variety of cellular processes, including cell division, adhesion, differentiation, and response to stress. The activity of the protein is negatively regulated by its SH3 domain, whereby deletion of the region encoding this domain results in an oncogene. The ubiquitously expressed protein has DNA-binding activity that is regulated by CDC2-mediated phosphorylation, suggesting a cell cycle function. This gene has been found fused to a variety of translocation partner genes in various leukemias, most notably the t(9;22) translocation that results in a fusion with the 5' end of the breakpoint cluster region gene (BCR; MIM:151410). Alternative splicing of this gene results in two transcript variants, which contain alternative first exons that are spliced to the remaining common exons. [provided by RefSeq, Aug 2014]</p>
Molecular Mass	36.74 kDa
AA Sequence	KTKATSLVDAVNSDAAKPSQPG EGLKPKVLPATPKPQSAKPSGTPISPAPVPSTLPS ASSALAGDQPSSTAFIPLISTRVSLRKTRQPPERIASGAIKTKG

 Tel: 1-631-559-9269 1-516-512-3133

 Email: info@creative-biomart.com  Fax: 1-631-938-8127

 45-1 Ramsey Road, Shirley, NY 11967, USA

Applications	<p>Enzyme-linked Immunoabsorbent Assay</p> <p>Western Blot (Recombinant protein)</p> <p>Antibody Production</p> <p>Protein Array</p>
Notes	Best use within three months from the date of receipt of this protein.
Storage	Store at -80 centigrade. Aliquot to avoid repeated freezing and thawing.
Storage Buffer	50 mM Tris-HCl, 10 mM reduced Glutathione, pH=8.0 in the elution buffer.
GENE INFORMATION	
Gene Name	ABL1 c-abl oncogene 1, non-receptor tyrosine kinase [Homo sapiens]
Official Symbol	ABL1
Synonyms	<p>ABL1; c-abl oncogene 1, non-receptor tyrosine kinase; ABL, c abl oncogene 1, receptor tyrosine kinase , v abl Abelson murine leukemia viral oncogene homolog 1; tyrosine-protein kinase ABL1; c ABL; JTK7; p150; proto-oncogene c-Abl; bcr/c-abl oncogene protein; Abelson tyrosine-protein kinase 1; c-abl oncogene 1, receptor tyrosine kinase; proto-oncogene tyrosine-protein kinase ABL1; v-abl Abelson murine leukemia viral oncogene homolog 1; ABL; c-ABL; v-abl; bcr/abl;</p>
Gene ID	25
mRNA Refseq	NM_005157
Protein Refseq	NP_005148
MIM	189980

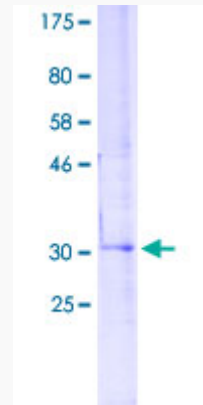
 Tel: 1-631-559-9269 1-516-512-3133

 Email: info@creative-biomart.com  Fax: 1-631-938-8127

 45-1 Ramsey Road, Shirley, NY 11967, USA

UniProt ID

P00519



12.5% SDS-PAGE Stained with Coomassie Blue.

 Tel: 1-631-559-9269 1-516-512-3133

 Email: info@creative-biomart.com  Fax: 1-631-938-8127

 45-1 Ramsey Road, Shirley, NY 11967, USA