

Recombinant Human ABL1, SH3 Domain, GST-tagged

Cat. No. ABL1-162H **Lot. No.** (See product label)

SPECIFICATION

Species	Human
Source	E.coli
Description	N-terminal GST tagged Abl SH3 domain. Abl SH3 domain is the SH3 domain of Abl tyrosine kinase. SH3 domains are known to bind proline rich peptides. The Abl SH3 domain has been expressed as a fusion protein with GST allowing expression in E. coli and purification by affinity chromatography. The native GST-Abl-SH3 is the ideal tool for in vitro/in vivo investigations of the behaviour of cellular prions. It may be used for protein-protein interaction studies as well as for in vitro/in vivo conversion studies. The GST-Tag facilitates the protein's application in typical GST pull-down assays.
Form	Lyophilized.
Purity	≥90% by SDS-PAGE.
Usage	For in vitro use only.
Storage	Quality guaranteed for 12 months store at -20°C. Avoid freeze / thaw cycles.

GENE INFORMATION

Gene Name	ABL1 c-abl oncogene 1, receptor tyrosine kinase [Homo sapiens]
Synonyms	ABL1; c-abl oncogene 1, receptor tyrosine kinase; ABL; JTK7; p150; c-ABL; v-abl;

 Tel: 1-631-559-9269 1-516-512-3133

 Email: info@creative-biomart.com  Fax: 1-631-938-8127

 45-1 Ramsey Road, Shirley, NY 11967, USA

bcr/abl; bcr/c-abl oncogene protein; proto-oncogene tyrosine-protein kinase ABL1; v-abl Abelson murine leukemia viral oncogene homolog 1; EC 2.7.10.2; Abelson murine leukemia viral oncogene homolog 1; OTTHUMP00000022375; OTTHUMP00000022376

Gene ID [25](#)

mRNA Refseq [NM_005157](#)

Protein Refseq [NP_005148](#)

MIM [189980](#)

UniProt ID [P00519](#)

Chromosome Location 9q34.1

Pathway Axon guidance; Cell cycle; Chronic myeloid leukemia; ErbB signaling pathway; Neurotrophin signaling pathway; Pathogenic Escherichia coli infection; Pathways in cancer

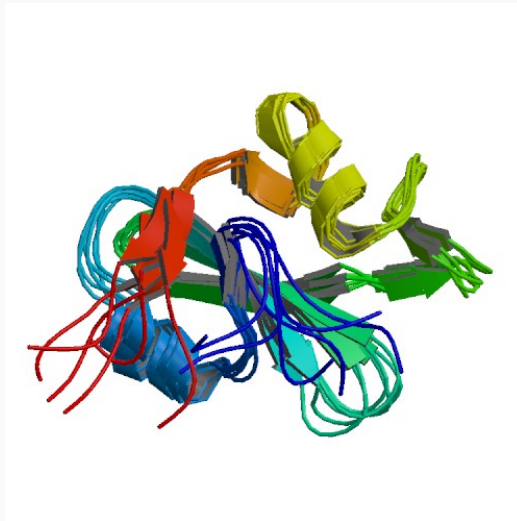
Function ATP binding; DNA binding; magnesium ion binding; manganese ion binding; non-membrane spanning protein tyrosine kinase activity; nucleotide binding; protein C-terminus binding; transferase activity

 Tel: 1-631-559-9269 1-516-512-3133

 Email: info@creative-biomart.com  Fax: 1-631-938-8127

 45-1 Ramsey Road, Shirley, NY 11967, USA

PDB rendering based
on 1ab2.



 Tel: 1-631-559-9269 1-516-512-3133

 Email: info@creative-biomart.com  Fax: 1-631-938-8127

 45-1 Ramsey Road, Shirley, NY 11967, USA