

Recombinant Active Human ABL1 (Y245F Y412F) Protein (27-end), N-His-tagged

Cat. No. ABL1-16H Lot. No. (See product label)

SPECIFICATION

Product Overview

Recombinant human ABL1 (Y245F Y412F) (27-end) was expressed by baculovirus in Sf9 insect cells using an N-terminal His tag.

Species

Human

Source

Sf9 Cells

ProteinLength

27-end

Description

ABL1 protooncogene encodes a cytoplasmic and nuclear protein tyrosine kinase that has been implicated in processes of cell differentiation, cell division, cell adhesion, and stress response. Activity of ABL protein is negatively regulated by its SH3 domain and deletion of the SH3 domain turns ABL1 into an oncogene. Translocation and head-to-tail fusion of the BCR and ABL1 genes is present in many cases of chronic myelogenous leukemia. The DNA-binding activity of the ubiquitously expressed ABL1 tyrosine kinase is regulated by CDK1-mediated phosphorylation, suggesting a cell cycle function for ABL1.

Bio-activity

The specific activity of ABL1 (Y245F Y412F) was determined to be 66 nmol/min/mg as per activity assay protocol.

Molecular Mass

Observed MW: ~135 kDa.
Calculated MW: ~127.8 kDa.

 Tel: 1-631-559-9269 1-516-512-3133

 Email: info@creative-biomart.com  Fax: 1-631-938-8127

 45-1 Ramsey Road, Shirley, NY 11967, USA

Purity	The purity of ABLI (Y245F Y412F) was determined to be ~ 75 % by densitometry.
Stability	One year at -70 centigrade from date of shipment.
Storage	Store product at -70 centigrade. For optimal storage, aliquot target into smaller quantities after centrifugation and store at recommended temperature. For most favorable performance, avoid repeated handling and multiple freeze/thaw cycles.
Concentration	0.1 µg/µL
Storage Buffer	Recombinant protein stored in 50mM sodium phosphate, pH 7.0, 300mM NaCl, 150mM imidazole, 0.25mM DTT, 25% glycerol.
Shipping	Dry ice

GENE INFORMATION

Gene Name	ABL1 c-abl oncogene 1, non-receptor tyrosine kinase [Homo sapiens (human)]
Official Symbol	ABL1
Synonyms	ABL1; c-abl oncogene 1, non-receptor tyrosine kinase; ABL, c abl oncogene 1, receptor tyrosine kinase, v abl Abelson murine leukemia viral oncogene homolog 1; tyrosine-protein kinase ABL1; c ABL; JTK7; p150; proto-oncogene c-Abl; bcr/c-abl oncogene protein; Abelson tyrosine-protein kinase 1; c-abl oncogene 1, receptor tyrosine kinase; proto-oncogene tyrosine-protein kinase ABL1; v-abl Abelson murine leukemia viral oncogene homolog 1; ABL; c-ABL; v-abl; bcr/abl;
Gene ID	25
mRNA Refseq	NM_005157

 Tel: 1-631-559-9269 1-516-512-3133

 Email: info@creative-biomart.com  Fax: 1-631-938-8127

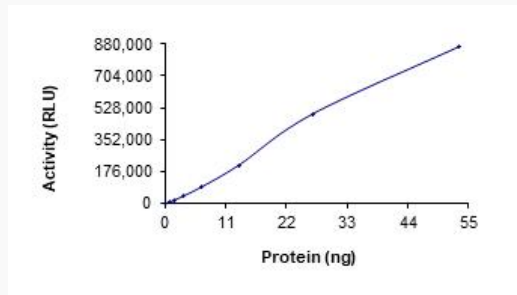
 45-1 Ramsey Road, Shirley, NY 11967, USA

Protein Refseq NP_005148

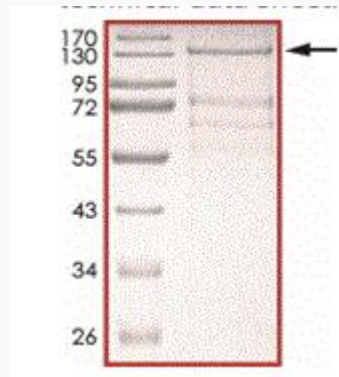
MIM 189980

UniProt ID P00519

Activity



Purity



 Tel: 1-631-559-9269 1-516-512-3133

 Email: info@creative-biomart.com  Fax: 1-631-938-8127

 45-1 Ramsey Road, Shirley, NY 11967, USA