

# Active Recombinant Full Length Human ABL1 Protein, His-tagged

Cat. No. ABL1-7728HF    Lot. No. (See product label)

## SPECIFICATION

<b>Product Overview</b>	Full-length human ABL [2-1130(end) amino acids of accession number NP_005148.2] was expressed as N-terminal His-tagged protein (126 kDa) using baculovirus expression system. His-tagged ABL was purified by using Ni-NTA affinity chromatography.
<b>Species</b>	Human
<b>Source</b>	Sf21 Cells
<b>ProteinLength</b>	2-1130(end)
<b>Form</b>	50 mM Tris-HCl, 150 mM NaCl, 0.1% CHAPS, 1 mM DTT, 10% glycerol, pH 7.5
<b>Bio-activity</b>	The activity was measured by off-chip mobility shift assay(MSA). The enzyme was incubated with fluorescence-labeled substrate and Mg(or Mn)/ATP. The phosphorylated and unphosphorylated substrates were separated and detected by MSA device.
<b>Purity</b>	70%
<b>Applications</b>	SDS-PAGE
<b>Storage</b>	Store at -80C. Avoid repeating freeze-thaws.

 Tel: 1-631-559-9269    1-516-512-3133

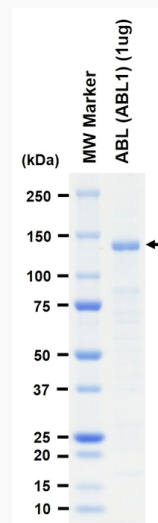
 Email: [info@creative-biomart.com](mailto:info@creative-biomart.com)     Fax: 1-631-938-8127

 45-1 Ramsey Road, Shirley, NY 11967, USA

## GENE INFORMATION

<b>Gene Name</b>	c-abl oncogene 1, non-receptor tyrosine kinase
<b>Official Symbol</b>	ABL1
<b>Synonyms</b>	ABL1;ABL;BCR-ABL;CHDSKM;JTK7;bcr/abl;c-ABL;c-ABL1;p150;v-abl;ATEST
<b>Protein Refseq</b>	<a href="#">NP_005148.2</a>
<b>UniProt ID</b>	<a href="#">P00519</a>

## SDS-PAGE

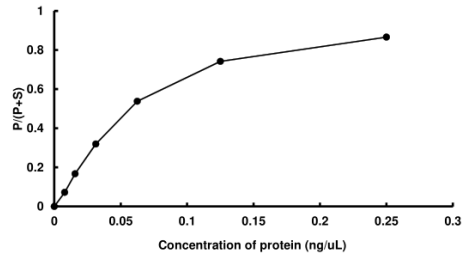


The purity was assessed by SDS-PAGE/CBB staining.

 Tel: 1-631-559-9269 1-516-512-3133

 Email: [info@creative-biomart.com](mailto:info@creative-biomart.com)  Fax: 1-631-938-8127

 45-1 Ramsey Road, Shirley, NY 11967, USA

**Activity data****Activity data**

The activity was measured by off-chip mobility shift assay(MSA). The enzyme was incubated with fluorescence-labeled substrate and Mg(or Mn)/ATP. The phosphorylated and unphosphorylated substrates were separated and detected by MSA device.

 Tel: 1-631-559-9269 1-516-512-3133

 Email: [info@creative-biomart.com](mailto:info@creative-biomart.com)  Fax: 1-631-938-8127

 45-1 Ramsey Road, Shirley, NY 11967, USA