

Active Recombinant Human ABL1 protein, GST-tagged

Cat. No. ABL1-783H **Lot. No.** (See product label)

SPECIFICATION

Product Overview	Active Recombinant Human ABL1 protein(Pro 137-Ser 554)(NP_009297.2) was expressed in Insect Cells, fused with the GST tag at the N-terminus.
Species	Human
Source	Insect Cells
ProteinLength	137-554 aa
Form	Supplied as sterile 50mM Tris, 100mM NaCl, 0.5mM PMSF, 0.5mM EDTA, 0.5mM Reduced Glutathione, pH 8.0.
Bio-activity	The specific activity was determined to be 240 nmol/min/mg using synthetic Abl peptide (EAIYAAPFAKKK) as substrate.
Molecular Mass	The recombinant human ABL1/GST chimera consists of 645 amino acids and predicts a molecular mass of 74 kDa. It migrates as an approximately 65 kDa band in SDS-PAGE under reducing conditions.
Endotoxin	< 1.0 EU per µg of the protein as determined by the LAL method.
Purity	> 92 % as determined by SDS-PAGE
Storage	Store it under sterile conditions at -20°C to -80°C upon receiving. Recommend to aliquot the protein into smaller quantities for optimal storage. Avoid repeated freeze-

 Tel: 1-631-559-9269 1-516-512-3133

 Email: info@creative-biomart.com  Fax: 1-631-938-8127

 45-1 Ramsey Road, Shirley, NY 11967, USA

	thaw cycles.
Concentration	0.2 ug/ul
protein Refseq-Weblink	http://www.ncbi.nlm.nih.gov/protein/NP_005148.2
Unit ID	P00519
Unit ID-Weblink	https://www.uniprot.org/uniprotkb/P00519

GENE INFORMATION

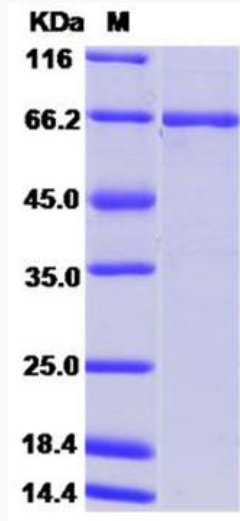
Gene Name	ABL1 c-abl oncogene 1, non-receptor tyrosine kinase [Homo sapiens]
Official Symbol	ABL1
Synonyms	ABL1; c-abl oncogene 1, non-receptor tyrosine kinase; ABL, c abl oncogene 1, receptor tyrosine kinase, v abl Abelson murine leukemia viral oncogene homolog 1; tyrosine-protein kinase ABL1; c ABL; JTK7; p150; proto-oncogene c-Abl; bcr/c-abl oncogene protein; Abelson tyrosine-protein kinase 1; c-abl oncogene 1, receptor tyrosine kinase; proto-oncogene tyrosine-protein kinase ABL1; v-abl Abelson murine leukemia viral oncogene homolog 1; ABL; c-ABL; v-abl; bcr/abl;
Gene ID	25
mRNA Refseq	NM_005157
protein Refseq	NP_005148
MIM	189980

 Tel: 1-631-559-9269 1-516-512-3133

 Email: info@creative-biomart.com  Fax: 1-631-938-8127

 45-1 Ramsey Road, Shirley, NY 11967, USA

SDS-PAGE



 Tel: 1-631-559-9269 1-516-512-3133

 Email: info@creative-biomart.com  Fax: 1-631-938-8127

 45-1 Ramsey Road, Shirley, NY 11967, USA