

Active Recombinant Full Length Human ABL1 Protein, His-tagged

Cat. No. ABL1-7999HF Lot. No. (See product label)

SPECIFICATION

Product Overview	Full-length human ABL [2-1130(end) amino acids and T315I of accession number NP_005148.2] was expressed as N-terminal His-tagged protein (126 kDa) using baculovirus expression system. His-tagged ABL[T315I] was purified by using Ni-NTA affinity chromatography.
Species	Human
Source	Sf21 Cells
ProteinLength	2-1130(end)
Form	50 mM Tris-HCl, 150 mM NaCl, 0.05% Brij35, 1 mM DTT, 10% glycerol, pH7.5
Bio-activity	The activity was measured by off-chip mobility shift assay. The enzyme was incubated with fluorescence-labeled substrate and Mg(or Mn)/ATP. The phosphorylated and unphosphorylated substrates were separated and detected by LabChip™3000.
Purity	72%
Applications	SDS-PAGE
Storage	Store at -80C. Avoid repeating freeze-thaws.

 Tel: 1-631-559-9269 1-516-512-3133

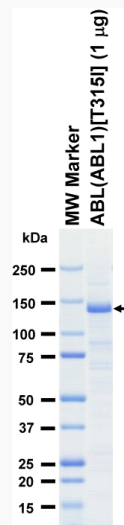
 Email: info@creative-biomart.com  Fax: 1-631-938-8127

 45-1 Ramsey Road, Shirley, NY 11967, USA

GENE INFORMATION

Gene Name	c-abl oncogene 1, non-receptor tyrosine kinase
Official Symbol	ABL1
Synonyms	ABL1;ABL;BCR-ABL;CHDSKM;JTK7;bcr/abl;c-ABL;c-ABL1;p150;v-abl;ATEST
Protein Refseq	NP_005148.2
UniProt ID	P00519

SDS-PAGE

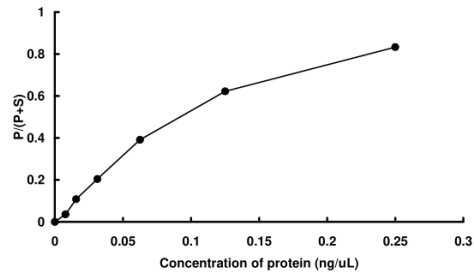


The purity was assessed by SDS-PAGE/CBB staining.

 Tel: 1-631-559-9269 1-516-512-3133

 Email: info@creative-biomart.com  Fax: 1-631-938-8127

 45-1 Ramsey Road, Shirley, NY 11967, USA

Activity data**Activity data**

The activity was measured by off-chip mobility shift assay. The enzyme was incubated with fluorescence-labeled substrate and Mg(or Mn)/ATP. The phosphorylated and unphosphorylated substrates were separated and detected by LabChip™3000.

 Tel: 1-631-559-9269 1-516-512-3133

 Email: info@creative-biomart.com  Fax: 1-631-938-8127

 45-1 Ramsey Road, Shirley, NY 11967, USA