

Active Recombinant Human ABL2 Protein, His-Tagged

Cat. No. ABL2-105H **Lot. No.** (See product label)

SPECIFICATION

Product Overview	Human ABL2 (NM_005158, 38 a.a. - end) partial recombinant with His tag expressed in Sf9 cells.
Species	Human
Source	Insect Cells
ProteinLength	38-end a.a.
Description	<p>This gene encodes a member of the Abelson family of nonreceptor tyrosine protein kinases. The protein is highly similar to the c-abl oncogene 1 protein, including the tyrosine kinase, SH2 and SH3 domains, and it plays a role in cytoskeletal rearrangements through its C-terminal F-actin- and microtubule-binding sequences. This gene is expressed in both normal and tumor cells, and is involved in translocation with the ets variant 6 gene in leukemia. Multiple alternatively spliced transcript variants encoding different protein isoforms have been found for this gene. [provided by RefSeq, Nov 2009]</p>
Bio-activity	The specific activity was determined to be 1218 nmol /min/mg as per Activity Assay Protocol.
Molecular Mass	132 kDa
Purity	> 70% by densitometry

 Tel: 1-631-559-9269 1-516-512-3133

 Email: info@creative-biomart.com  Fax: 1-631-938-8127

 45-1 Ramsey Road, Shirley, NY 11967, USA

Applications	Functional Study SDS-PAGE
Storage	Store at -80 centigrade. Aliquot to avoid repeated freezing and thawing.
Storage Buffer	In 50 mM Tris-HCl, 150 mM NaCl, pH 7.5 (0.25 mM DTT, 0.1 mM EGTA, 0.1 mM EDTA, 0.1 mM PMSF, 25% glycerol)

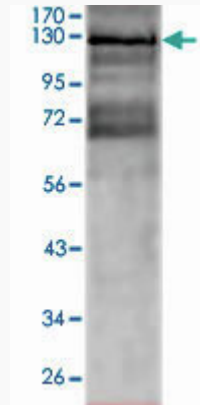
GENE INFORMATION

Gene Name	ABL2 v-abl Abelson murine leukemia viral oncogene homolog 2 [Homo sapiens]
Official Symbol	ABL2
Synonyms	ABL2; v-abl Abelson murine leukemia viral oncogene homolog 2; ABLL, v abl Abelson murine leukemia viral oncogene homolog 2 (arg, Abelson related gene); Abelson tyrosine-protein kinase 2; Abelson related gene; ARG; tyrosine-protein kinase ARG; abelson-related gene protein; ABLL;
Gene ID	27
mRNA Refseq	NM_001136000
Protein Refseq	NP_001129472
MIM	164690
UniProt ID	P42684

 Tel: 1-631-559-9269 1-516-512-3133

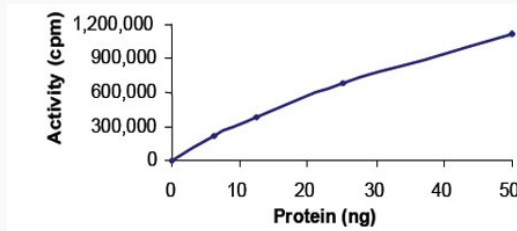
 Email: info@creative-biomart.com  Fax: 1-631-938-8127

 45-1 Ramsey Road, Shirley, NY 11967, USA



SDS-PAGE Stained with Coomassie Blue

Result of activity analysis



 Tel: 1-631-559-9269 1-516-512-3133

 Email: info@creative-biomart.com  Fax: 1-631-938-8127

 45-1 Ramsey Road, Shirley, NY 11967, USA