

Recombinant Human ABLIM2 Protein, Myc/DDK-tagged, C13 and N15-labeled

Cat. No. ABLIM2-1150H **Lot. No.** (See product label)

SPECIFICATION

Product Overview	ABLIM2 MS Standard C13 and N15-labeled recombinant protein (NP_001123555) with a C-terminal MYC/DDK tag, was expressed in HEK293 cells.
Species	Human
Source	HEK293
Description	ABLIM2 (Actin Binding LIM Protein Family Member 2) is a Protein Coding gene. Among its related pathways are Netrin-1 signaling and Axon guidance. Gene Ontology (GO) annotations related to this gene include actin binding. An important paralog of this gene is ABLIM1.
Molecular Mass	71.4 kDa
AA Sequence	MSAVSQPQAAPSPLEKSPSTAILCNTCGNVCKGEVLRVQDKYFHIKCFVCKACGCD LAEGGFFVRQGEYICTLDYQRLYGTRCFSCDQFIEGEVVSALGKTYHPDCFVCAVC RLPFPFGDRVTFNGKECMCQKCSLPVSVGSSAHLSQLRSCGGCGTEIKNGQALV ALDKHWHLGCFKCKSCGKLLNAEYISKDGLPYCEADYHAKFGIRCDSCEKYITGRVL EAGEKHYPSCALCVRCGQMFAEGEEMYLQGSSIWHPACRQAARTEDRNKETRTS SESIISVPASSTSGSPSRVIYAKLGGEILDYRDLAALPKSKAIYDIDRPDMISYSPYISH SAGDRQSYGEGDQDDRSYKQCRTSSPSSSTGSVSLGRYTPTSRSPQHYSRPAGTV SVGTSSCLSLSQHPSPTSVFRHHYIPYFRGSESGRSTPSLSVLSDSKPPPSTYQQAP RHFHVPDTGVKDNIYRKPPIYRQHAARRSDGEDGSLDQDNRKQKSSWMLKGDAD

 Tel: 1-631-559-9269 1-516-512-3133

 Email: info@creative-biomart.com  Fax: 1-631-938-8127

 45-1 Ramsey Road, Shirley, NY 11967, USA

TRTNSPDLDTQSLSHSSGTDRDPLQRMAGDSFHSRFPYKSDPLPGHGKNGLDQR
 NANLAPCGADPDASWGMREYKIYPYDSLIVTNRIRVKLPKDVDRTRLERHLSPEEFQ
 EVFGMSIEEFDRLALWKRNDLKKKALLFTRTRPLEQKLISEEDLAANDILDYKDDDDK
 V

Purity > 80% as determined by SDS-PAGE and Coomassie blue staining

Stability Stable for 3 months from receipt of products under proper storage and handling conditions.

Storage Store at -80 centigrade. Avoid repeated freeze-thaw cycles.

Concentration 50 µg/mL as determined by BCA

Storage Buffer 100 mM glycine, 25 mM Tris-HCl, pH 7.3.

GENE INFORMATION

Gene Name [ABLIM2 actin binding LIM protein family member 2 \[Homo sapiens \(human\) \]](#)

Official Symbol [ABLIM2](#)

Synonyms ABLIM2; actin binding LIM protein family, member 2; actin-binding LIM protein 2; abLIM-2; testis tissue sperm-binding protein Li 35a

Gene ID [84448](#)

mRNA Refseq [NM_001130083](#)

Protein Refseq [NP_001123555](#)

 Tel: 1-631-559-9269 1-516-512-3133

 Email: info@creative-biomart.com  Fax: 1-631-938-8127

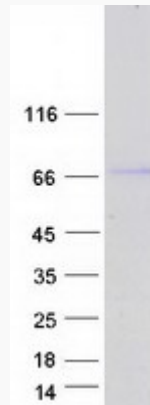
 45-1 Ramsey Road, Shirley, NY 11967, USA



MIM 612544

UniProt ID Q6H8Q1

SDS-PAGE



Tel: 1-631-559-9269 1-516-512-3133

Email: info@creative-biomart.com Fax: 1-631-938-8127

45-1 Ramsey Road, Shirley, NY 11967, USA