

Recombinant Human ABLIM2 Protein, Myc/DDK-tagged, C13 and N15-labeled

Cat. No. ABLIM2-4662H **Lot. No.** (See product label)

SPECIFICATION

Product Overview

ABLIM2 MS Standard C13 and N15-labeled recombinant protein (NP_001123560) with a C-terminal MYC/DDK tag, was expressed in HEK293 cells.

Species

Human

Source

HEK293

Description

ABLIM2 (Actin Binding LIM Protein Family Member 2) is a Protein Coding gene. Among its related pathways are Netrin-1 signaling and Axon guidance. Gene Ontology (GO) annotations related to this gene include actin binding. An important paralog of this gene is ABLIM1.

Molecular Mass

51.5 kDa

AA Sequence

```
MSAVSQPQAAPSPLEKSPSTAILCNTCGNVCKGEVLRVQDKYFHIKCFVCKACGCD
LAEGGFFVRQGEYICTLDYQRLYGTRCFSCDQFIEGEVVSALGKTYHPDCFVCAVC
RLPFPFGDRVTFNGKECMCQKCSLPVSVGSSAHL SQGLRSCGGCGTEIKNGQALV
ALDKHWHLGCFKCKSCGKLLNAEYISKDGLPYCEADYHAKFGIRCDSCEKYITGRVL
EAGEKHYPSCALCVRCGQMFAEGEEMYLQGSSIWHPACRQAARTEDRNKETRTS
SESIISVPASSTSGSPSRVIYAKLGGEILDYRDLAALPKSKAIYDIDRPDMISYSPYISH
SAGDRQSYGESPQLLSPTPTEGDQDDRSYKQCRTSSPSSTGSVSLGRYTPTSRSP
QHYSRPAARRSDGEDGSLDQDNRKQKSSWMLKGDADTRTNSPDLDTQSLSHSS
GTDRDPLQRMAGDSFHSREWFFTRTRPLEQKLISEEDLAANDILDYKDDDDKV
```

 Tel: 1-631-559-9269 1-516-512-3133

 Email: info@creative-biomart.com  Fax: 1-631-938-8127

 45-1 Ramsey Road, Shirley, NY 11967, USA

Purity	> 80% as determined by SDS-PAGE and Coomassie blue staining
Stability	Stable for 3 months from receipt of products under proper storage and handling conditions.
Storage	Store at -80 centigrade. Avoid repeated freeze-thaw cycles.
Concentration	50 µg/mL as determined by BCA
Storage Buffer	100 mM glycine, 25 mM Tris-HCl, pH 7.3.

GENE INFORMATION

Gene Name	ABLIM2 actin binding LIM protein family member 2 [Homo sapiens (human)]
Official Symbol	ABLIM2
Synonyms	ABLIM2; actin binding LIM protein family member 2; actin-binding LIM protein 2; abLIM-2; testis tissue sperm-binding protein Li 35a
Gene ID	84448
mRNA Refseq	NM_001130088
Protein Refseq	NP_001123560
MIM	612544
UniProt ID	Q6H8Q1

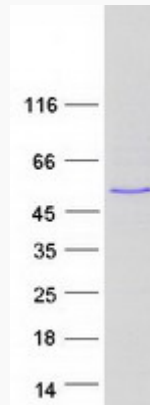
 Tel: 1-631-559-9269 1-516-512-3133

 Email: info@creative-biomart.com  Fax: 1-631-938-8127

 45-1 Ramsey Road, Shirley, NY 11967, USA



SDS-PAGE



Tel: 1-631-559-9269 1-516-512-3133

Email: info@creative-biomart.com Fax: 1-631-938-8127

45-1 Ramsey Road, Shirley, NY 11967, USA