

## Recombinant Human ABLIM3 Protein, GST-Tagged

Cat. No. ABLIM3-110H Lot. No. (See product label)

### SPECIFICATION

<b>Product Overview</b>	Human ABLIM3 full-length ORF ( AAH01665.1, 1 a.a. - 544 a.a.) recombinant protein with GST-tag at N-terminal.
<b>Species</b>	Human
<b>Source</b>	Wheat Germ
<b>Description</b>	This gene encodes a member of the actin-binding LIM (abLIM) family of proteins. These proteins are characterized by an N-terminal LIM domain and a C-terminal dematin-like domain. The encoded protein interacts with actin filaments and may be a component of adherens junctions in several cell types. A variant of this gene may be associated with pain sensitivity in male human patients. [provided by RefSeq, Sep 2016]
<b>Molecular Mass</b>	88 kDa
<b>AA Sequence</b>	MNTSIPYQQNPYNPRGSSNVIQCYRCGDTCKGEVVRVHNNHFHIRCFTCQVCGCG LAQSGFFFKNQEYICTQDYQQLYGTRCDSCRDFITGEVISALGRTYHPKCFVCSLCR KPFPIGDKVTFSGKECVCQTCSQSMASKPIKIRGPSHCAGCKEEIKHGQSLALDK QWHVSCFKCQTCSVILTGEYISKDGVYPYCESDYHAQFGIKCETCDRYISGRVLEAGG KHYHPTCARCVRCHQMFTEGEEMYLGTSEVWHPICKQAARAEEKLKHRRRTSETISIS PPGSSIGSPNRVICDIYENLDRQRASSPGYIDSPTYSRQGMSPTFRSRSPHHYYRS GDLSTATKSKTSEDISQTSKYSPIDPYASESEYWTYHGSPKVPARRRFSSGGE EDDFDRSMHKLQSGIGRLILKEEMKARSSSYADPWTPPRSSTSSREALHTAGYEMS

 Tel: 1-631-559-9269 1-516-512-3133

 Email: [info@creative-biomart.com](mailto:info@creative-biomart.com)  Fax: 1-631-938-8127

 45-1 Ramsey Road, Shirley, NY 11967, USA

LNGSPRSHYLADSDPLISKSASLPAYRRNGLHRTPSADLFHYDSMNAVNWGMREYK  
IYPYELLVTTTRGRNRLPKDVDTRTRLEGNFWKSGCL

<b>Applications</b>	<p>Enzyme-linked Immunoabsorbent Assay</p> <p>Western Blot (Recombinant protein)</p> <p>Antibody Production</p> <p>Protein Array</p>
<b>Notes</b>	Best use within three months from the date of receipt of this protein.
<b>Storage</b>	Store at -80 centigrade. Aliquot to avoid repeated freezing and thawing.
<b>Storage Buffer</b>	50 mM Tris-HCl, 10 mM reduced Glutathione, pH=8.0 in the elution buffer.

## GENE INFORMATION

<b>Gene Name</b>	<a href="#">ABLIM3 actin binding LIM protein family, member 3 [ Homo sapiens ]</a>
<b>Official Symbol</b>	<a href="#">ABLIM3</a>
<b>Synonyms</b>	ABLIM3; actin binding LIM protein family, member 3; actin-binding LIM protein 3; KIAA0843; abLIM-3; actin-binding LIM protein family member 3; HMFN1661;
<b>Gene ID</b>	<a href="#">22885</a>
<b>mRNA Refseq</b>	<a href="#">NM_014945</a>
<b>Protein Refseq</b>	<a href="#">NP_055760</a>
<b>MIM</b>	<a href="#">611305</a>

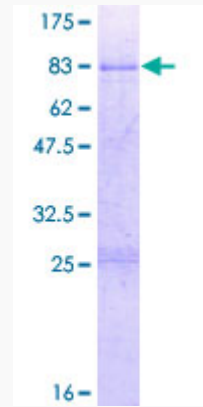
 Tel: 1-631-559-9269 1-516-512-3133

 Email: [info@creative-biomart.com](mailto:info@creative-biomart.com)  Fax: 1-631-938-8127

 45-1 Ramsey Road, Shirley, NY 11967, USA

UniProt ID

O94929



12.5% SDS-PAGE Stained with Coomassie Blue.

 Tel: 1-631-559-9269 1-516-512-3133

 Email: [info@creative-biomart.com](mailto:info@creative-biomart.com)  Fax: 1-631-938-8127

 45-1 Ramsey Road, Shirley, NY 11967, USA