

Recombinant Human ABRACL Protein, GST-Tagged

Cat. No. ABRACL-0103H Lot. No. (See product label)

SPECIFICATION

| | |
|-------------------------|---|
| Product Overview | Human ABRACL full-length ORF (AAH14953, 1 a.a. - 81 a.a.) recombinant protein with GST-tag at N-terminal. |
| Species | Human |
| Source | Wheat Germ |
| Description | ABRACL (ABRA C-Terminal Like) is a Protein Coding gene. |
| Molecular Mass | 34.65 kDa |
| AA Sequence | MNVDHEVNLLVEEIHRLGSKNADGKLSVKFGVLFRRDDKCANLFEALVGTLKAAKRRK IVTYPGELLQGVHDDVDIILLQD |
| Applications | Enzyme-linked Immunoabsorbent Assay Western Blot (Recombinant protein) Antibody Production Protein Array |
| Notes | Best use within three months from the date of receipt of this protein. |
| Storage | Store at -80 centigrade. Aliquot to avoid repeated freezing and thawing. |
| Storage Buffer | 50 mM Tris-HCl, 10 mM reduced Glutathione, pH=8.0 in the elution buffer. |

 Tel: 1-631-559-9269 1-516-512-3133

 Email: info@creative-biomart.com  Fax: 1-631-938-8127

 45-1 Ramsey Road, Shirley, NY 11967, USA

GENE INFORMATION

Gene Name ABRACL ABRA C-terminal like [Homo sapiens (human)]

Official Symbol ABRACL

Synonyms ABRACL; ABRA C-terminal like; C6ORF115; chromosome 6 open reading frame 115; C6orf115, chromosome 6 open reading frame 115; Costars; HSPC280; PRO2013; costars family protein ABRACL; ABRA C-terminal-like protein

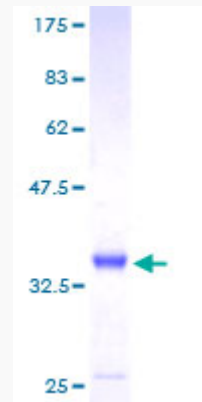
Gene ID 58527

mRNA Refseq NM_021243

Protein Refseq NP_067066

UniProt ID Q9P1F3

Quality Control Testing



12.5% SDS-PAGE Stained with Coomassie Blue.

 Tel: 1-631-559-9269 1-516-512-3133

 Email: info@creative-biomart.com  Fax: 1-631-938-8127

 45-1 Ramsey Road, Shirley, NY 11967, USA