

Recombinant Human ABT1 Protein, GST-Tagged

Cat. No. ABT1-118H **Lot. No.** (See product label)

SPECIFICATION

Product Overview	Human ABT1 full-length ORF (AAH48812, 1 a.a. - 272 a.a.) recombinant protein with GST-tag at N-terminal.
Species	Human
Source	Wheat Germ
Description	Basal transcription of genes by RNA polymerase II requires the interaction of TATA-binding protein (TBP) with the core region of class II promoters. Studies in mouse suggest that the protein encoded by this gene likely activates basal transcription from class II promoters by interaction with TBP and the class II promoter DNA. [provided by RefSeq, Jul 2008]
Molecular Mass	55.66 kDa
AA Sequence	MEAESEKAATEQEPLGTEQTLDAEEEQEESEEAACGSKKRVPVPGIVYLGHIPPRF RPLHVRNLLSAYGEVGRVFFQAEDRFVRRKKKAAAAAGGKKRSYTKDYTEGWVEF RDKRIAKRVAASLHNTPMGARRRSPFRYDLWNLKYLHRFTWSHLSEHLAFERQVRR QRLRAEVAQAKRETDFYLSVERGQRFLAADGDPARPDGSWTFAGRPTQEQLRAR KAARPGGRERARLATAQDKARSNKGLLARIFGAPPPSESMEGPSLVRDS
Applications	Enzyme-linked Immunoabsorbent Assay Western Blot (Recombinant protein) Antibody Production Protein Array

 Tel: 1-631-559-9269 1-516-512-3133

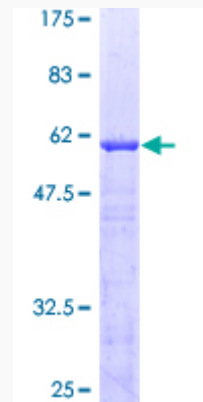
 Email: info@creative-biomart.com  Fax: 1-631-938-8127

 45-1 Ramsey Road, Shirley, NY 11967, USA

Notes	Best use within three months from the date of receipt of this protein.
Storage	Store at -80 centigrade. Aliquot to avoid repeated freezing and thawing.
Storage Buffer	50 mM Tris-HCl, 10 mM reduced Glutathione, pH=8.0 in the elution buffer.

GENE INFORMATION

Gene Name	ABT1 activator of basal transcription 1 [Homo sapiens]
Official Symbol	ABT1
Synonyms	hABT1
Gene ID	29777
mRNA Refseq	NM_013375
Protein Refseq	NP_037507
UniProt ID	Q9ULW3



 Tel: 1-631-559-9269 1-516-512-3133

 Email: info@creative-biomart.com  Fax: 1-631-938-8127

 45-1 Ramsey Road, Shirley, NY 11967, USA



12.5% SDS-PAGE Stained with Coomassie Blue.

 Tel: 1-631-559-9269 1-516-512-3133

 Email: info@creative-biomart.com  Fax: 1-631-938-8127

 45-1 Ramsey Road, Shirley, NY 11967, USA