

## Recombinant Human ABTB1 Protein, GST-Tagged

**Cat. No.** ABTB1-120H    **Lot. No.** (See product label)

### SPECIFICATION

<b>Product Overview</b>	Human ABTB1 full-length ORF ( NP_115937.1, 1 a.a. - 336 a.a.) recombinant protein with GST-tag at N-terminal.
<b>Species</b>	Human
<b>Source</b>	Wheat Germ
<b>Description</b>	This gene encodes a protein with an ankyrin repeat region and two BTB/POZ domains, which are thought to be involved in protein-protein interactions. Expression of this gene is activated by the phosphatase and tensin homolog, a tumor suppressor. Alternate splicing results in three transcript variants. [provided by RefSeq, Mar 2010]
<b>Molecular Mass</b>	64 kDa
<b>AA Sequence</b>	MLDTKWKGKSVVLRHPLINPVAFGALLQYLYTGRLDIGVEHVSDCERLAKQCQLW DLLSDLEAKCEKVSEFVASKPGTCVKVLTIEPPPADPRLREDMALLADCALPPELRG DLWELPFPCPDGFNSCPDICFRVAGCSFLCHKAFFCGRSDYFRALLDDHDFRESEEP ATSGGPPAVTLHGISPDPVFTHVLYMYSDHTELSPEAAYDVLSVADMYLLPGLKRLC GRSLAQMLDEDTVGVWRVAKLFRLARLEDQCTEYMAKVIEKLVEREDFVEAVKEE AAVAARQETDSIPLVDDIRFHVASTVQTYSAIEEAQQRLRALEDLLVSIQLDC
<b>Applications</b>	Enzyme-linked Immunoabsorbent Assay Western Blot (Recombinant protein) Antibody Production Protein Array

 Tel: 1-631-559-9269    1-516-512-3133

 Email: [info@creative-biomart.com](mailto:info@creative-biomart.com)     Fax: 1-631-938-8127

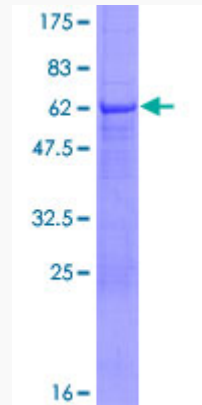
 45-1 Ramsey Road, Shirley, NY 11967, USA

<b>Notes</b>	Best use within three months from the date of receipt of this protein.
<b>Storage</b>	Store at -80 centigrade. Aliquot to avoid repeated freezing and thawing.
<b>Storage Buffer</b>	50 mM Tris-HCl, 10 mM reduced Glutathione, pH=8.0 in the elution buffer.
<b>GENE INFORMATION</b>	
<b>Gene Name</b>	ABTB1 ankyrin repeat and BTB (POZ) domain containing 1 [ Homo sapiens ]
<b>Official Symbol</b>	ABTB1
<b>Synonyms</b>	ABTB1; ankyrin repeat and BTB (POZ) domain containing 1; ankyrin repeat and BTB/POZ domain-containing protein 1; BPOZ; Btb3; EF1ABP; elongation factor 1A-binding protein; BTB3; PP2259; MGC20585;
<b>Gene ID</b>	80325
<b>mRNA Refseq</b>	NM_032548
<b>Protein Refseq</b>	NP_115937
<b>MIM</b>	608308
<b>UniProt ID</b>	Q969K4

 Tel: 1-631-559-9269 1-516-512-3133

 Email: [info@creative-biomart.com](mailto:info@creative-biomart.com)  Fax: 1-631-938-8127

 45-1 Ramsey Road, Shirley, NY 11967, USA



12.5% SDS-PAGE Stained with Coomassie Blue.

 Tel: 1-631-559-9269 1-516-512-3133

 Email: [info@creative-biomart.com](mailto:info@creative-biomart.com)  Fax: 1-631-938-8127

 45-1 Ramsey Road, Shirley, NY 11967, USA