

## Recombinant Human ACADL Protein, GST-Tagged

Cat. No. ACADL-132H Lot. No. (See product label)

### SPECIFICATION

**Product Overview** Human ACADL full-length ORF ( AAH39063, 1 a.a. - 430 a.a.) recombinant protein with GST-tag at N-terminal.

**Species** Human

**Source** Wheat Germ

**Description** The protein encoded by this gene belongs to the acyl-CoA dehydrogenase family, which is a family of mitochondrial flavoenzymes involved in fatty acid and branched chain amino-acid metabolism. This protein is one of the four enzymes that catalyze the initial step of mitochondrial beta-oxidation of straight-chain fatty acid. Defects in this gene are the cause of long-chain acyl-CoA dehydrogenase (LCAD) deficiency, leading to nonketotic hypoglycemia. [provided by RefSeq, Jul 2008]

**Molecular Mass** 73.04 kDa

**AA Sequence**

```

MAARLLRGSLRVLGGHRAPRQLPAARCSHSGGEERLETPSAKKLTDIGIRRIFSPEH
DIFRKSVRKFFQEEVIPHHSEWEKAGEVSREVWEKAGKQGLLGVNIAEHLGGIGGDL
YSAAIWEEQAYSNCSPGFSIHSGIVMSYITNHGSEEQIKHFIPQMTAGKCIGAIAM
TEPGAGSDLQGIKTNAKKDGSDWILNGSKVFISNGSLSDVVIVVAVTNHEAPSPAHGI
SLFLVENGMGKFIKGRKLHKMGLKAQDTAELFFEDIRLPASALLGEENKGFYYIMKEL
PQERLLIADVAISASEFMFEETRNYYVKQRKAFGKTVAHLQTVQHKLAELKTHICVTRA
FVDNCLQLHEAKRLDSATACMAKYWASELQNSVAYDCVQLHGGWGYMWEYPIAK
AYVDARVQPIYGGTNEIMKELIAREIVFDK
    
```

 Tel: 1-631-559-9269 1-516-512-3133

 Email: [info@creative-biomart.com](mailto:info@creative-biomart.com)  Fax: 1-631-938-8127

 45-1 Ramsey Road, Shirley, NY 11967, USA

<b>Applications</b>	Enzyme-linked Immunoabsorbent Assay Western Blot (Recombinant protein) Antibody Production Protein Array
<b>Notes</b>	Best use within three months from the date of receipt of this protein.
<b>Storage</b>	Store at -80 centigrade. Aliquot to avoid repeated freezing and thawing.
<b>Storage Buffer</b>	50 mM Tris-HCl, 10 mM reduced Glutathione, pH=8.0 in the elution buffer.

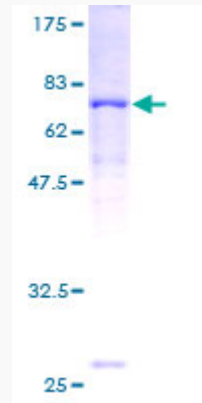
## GENE INFORMATION

<b>Gene Name</b>	ACADL acyl-CoA dehydrogenase, long chain [ Homo sapiens ]
<b>Official Symbol</b>	ACADL
<b>Synonyms</b>	ACADL; acyl-CoA dehydrogenase, long chain; acyl Coenzyme A dehydrogenase, long chain; long-chain specific acyl-CoA dehydrogenase, mitochondrial; ACAD4; LCAD; acyl-Coenzyme A dehydrogenase, long chain; FLJ94052;
<b>Gene ID</b>	33
<b>mRNA Refseq</b>	NM_001608
<b>Protein Refseq</b>	NP_001599
<b>MIM</b>	609576
<b>UniProt ID</b>	P28330

 Tel: 1-631-559-9269 1-516-512-3133

 Email: [info@creative-biomart.com](mailto:info@creative-biomart.com)  Fax: 1-631-938-8127

 45-1 Ramsey Road, Shirley, NY 11967, USA



12.5% SDS-PAGE Stained with Coomassie Blue.

 Tel: 1-631-559-9269 1-516-512-3133

 Email: [info@creative-biomart.com](mailto:info@creative-biomart.com)  Fax: 1-631-938-8127

 45-1 Ramsey Road, Shirley, NY 11967, USA