

Recombinant Human ACAN Protein, GST-Tagged

Cat. No. ACAN-140H Lot. No. (See product label)

SPECIFICATION

Product Overview Human ACAN full-length ORF (AAH36445.1, 1 a.a. - 721 a.a.) recombinant protein with GST-tag at N-terminal.

Species Human

Source Wheat Germ

Description This gene is a member of the aggrecan/versican proteoglycan family. The encoded protein is an integral part of the extracellular matrix in cartilagenous tissue and it withstands compression in cartilage. Mutations in this gene may be involved in skeletal dysplasia and spinal degeneration. Multiple alternatively spliced transcript variants that encode different protein isoforms have been observed in this gene. [provided by RefSeq, Jul 2008]

Molecular Mass 73.08 kDa

AA Sequence

```

MAARLLRGSLRVLGGHRAPRQLPAARCSHSGGEERLETPSAKKLTDIGIRRIF SPEH
DIFRKSVRKFFQEEVIPHHSEWEKAGEVSREVWEKAGKQGLLGVNIAEHLGGIGGDL
YSAAIWEEQAYSNCSPGFSIHSGIVMSYITNHGSEEQIKHFIPQMTAGKCIGAIAM
TEPGAGSDLQGIKTNAKKDGSDWILNGSKVFISNGSLSDVVIVVAVTNHEAPSPAHGI
SLFLVENGMGKGFIKGRKLHKMGLKAQDTAELFFEDIRLPASALLGEENKGFYYIMKEL
PQERLLIADVAISASEFMFEETRN YVKQRKAFGKTVAHLQTVQHKLAE LKTHICVTRA
FVDNCLQLHEAKRLDSATACMAKYWASELQNSVAYDCVQLHGGWGYMWEYPIAK
AYVDARVQPIYGGTNEIMKELIAREIVFDK
    
```

 Tel: 1-631-559-9269 1-516-512-3133

 Email: info@creative-biomart.com  Fax: 1-631-938-8127

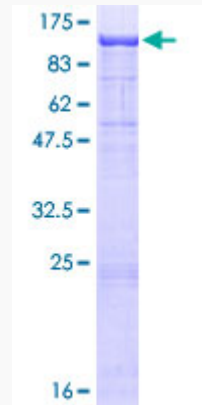
 45-1 Ramsey Road, Shirley, NY 11967, USA

Applications	Enzyme-linked Immunoabsorbent Assay Western Blot (Recombinant protein) Antibody Production Protein Array
Notes	Best use within three months from the date of receipt of this protein.
Storage	Store at -80 centigrade. Aliquot to avoid repeated freezing and thawing.
Storage Buffer	50 mM Tris-HCl, 10 mM reduced Glutathione, pH=8.0 in the elution buffer.
GENE INFORMATION	
Gene Name	ACAN aggrecan [Homo sapiens]
Official Symbol	ACAN
Synonyms	ACAN; aggrecan; AGC1, aggrecan 1 , chondroitin sulfate proteoglycan 1 , CSPG1, MSK16; aggrecan core protein; aggrecan proteoglycan; CSPGCP; large aggregating proteoglycan; cartilage-specific proteoglycan core protein; chondroitin sulfate proteoglycan core protein 1; AGC1; SEDK; AGCAN; CSPG1; MSK16;
Gene ID	176
mRNA Refseq	NM_001135
Protein Refseq	NP_001126
MIM	155760
UniProt ID	P16112

 Tel: 1-631-559-9269 1-516-512-3133

 Email: info@creative-biomart.com  Fax: 1-631-938-8127

 45-1 Ramsey Road, Shirley, NY 11967, USA



12.5% SDS-PAGE Stained with Coomassie Blue.

 Tel: 1-631-559-9269 1-516-512-3133

 Email: info@creative-biomart.com  Fax: 1-631-938-8127

 45-1 Ramsey Road, Shirley, NY 11967, USA