

Recombinant Human ACAN Protein, His-tagged

Cat. No. ACAN-29H Lot. No. (See product label)

SPECIFICATION

Product Overview	Recombinant Human ACAN Protein (Ala2162-Pro2316) with N-His tag was expressed in E. coli.
Species	Human
Source	E.coli
ProteinLength	Ala2162-Pro2316
Description	This gene is a member of the aggrecan/versican proteoglycan family. The encoded protein is an integral part of the extracellular matrix in cartilagenous tissue and it withstands compression in cartilage. Mutations in this gene may be involved in skeletal dysplasia and spinal degeneration. Multiple alternatively spliced transcript variants that encode different protein isoforms have been observed in this gene.
Form	Freeze-dried powder
Molecular Mass	Predicted Molecular Mass: 23.7 kDa
Purity	> 95%
Applications	Positive Control; Immunogen; SDS-PAGE; WB.
Stability	The thermal stability is described by the loss rate. The loss rate was determined by accelerated thermal degradation test, that is, incubate the protein at 37 centigrade for

 Tel: 1-631-559-9269 1-516-512-3133

 Email: info@creative-biomart.com  Fax: 1-631-938-8127

 45-1 Ramsey Road, Shirley, NY 11967, USA

48h, and no obvious degradation and precipitation were observed. The loss rate is less than 5% within the expiration date under appropriate storage condition.

Storage

Avoid repeated freeze/thaw cycles. Store at 2-8 centigrade for one month. Aliquot and store at -80 centigrade for 12 months.

Storage Buffer

PBS, pH7.4, containing 0.01% SKL, 1 mM DTT, 5% Trehalose and Proclin300.

Reconstitution

Reconstitute in sterile water to a concentration of 0.1-1.0 mg/mL. Do not vortex.

GENE INFORMATION

Gene Name

[ACAN aggrecan \[Homo sapiens \(human\) \]](#)

Official Symbol

[ACAN](#)

Synonyms

ACAN; aggrecan; AGC1; SEDK; AGCAN; CSPG1; MSK16; CSPGCP; SSOAOD; aggrecan core protein; cartilage-specific proteoglycan core protein; chondroitin sulfate proteoglycan core protein 1; large aggregating proteoglycan

Gene ID

[176](#)

mRNA Refseq

[NM_013227](#)

Protein Refseq

[NP_037359](#)

MIM

[155760](#)

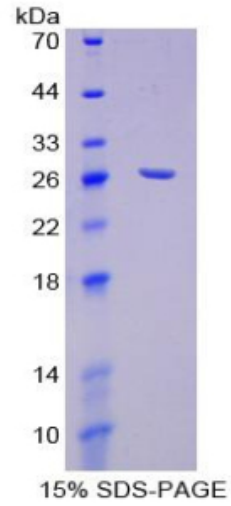
UniProt ID

[P16112](#)

 Tel: 1-631-559-9269 1-516-512-3133

 Email: info@creative-biomart.com  Fax: 1-631-938-8127

 45-1 Ramsey Road, Shirley, NY 11967, USA



 Tel: 1-631-559-9269 1-516-512-3133

 Email: info@creative-biomart.com  Fax: 1-631-938-8127

 45-1 Ramsey Road, Shirley, NY 11967, USA