

Recombinant Human ACAN Protein, GST-tagged

Cat. No. ACAN-420H Lot. No. (See product label)

SPECIFICATION

Product Overview	Human AGC1 partial ORF (NP_037359, 56 a.a. - 155 a.a.) recombinant protein with GST-tag at N-terminal.
Species	Human
Source	Wheat Germ
Description	This gene is a member of the aggrecan/versican proteoglycan family. The encoded protein is an integral part of the extracellular matrix in cartilagenous tissue and it withstands compression in cartilage. Mutations in this gene may be involved in skeletal dysplasia and spinal degeneration. Multiple alternatively spliced transcript variants that encode different protein isoforms have been observed in this gene. [provided by RefSeq, Jul 2008]
Molecular Mass	36.74 kDa
AA Sequence	PMHPVTTAPSTAPLAPRIKWSRVSKEKEVLLVATEGRVVRVNSAYQDKVSLPNYPAI PSDATLEVQSLRSNDSGVYRCEVMHGIEDSEATLEVVVKGIVF
Applications	Enzyme-linked Immunoabsorbent Assay Western Blot (Recombinant protein) Antibody Production Protein Array
Notes	Best use within three months from the date of receipt of this protein.

 Tel: 1-631-559-9269 1-516-512-3133

 Email: info@creative-biomart.com  Fax: 1-631-938-8127

 45-1 Ramsey Road, Shirley, NY 11967, USA

Storage Store at -80centigrade. Aliquot to avoid repeated freezing and thawing.

Storage Buffer 50 mM Tris-HCl, 10 mM reduced Glutathione, pH=8.0 in the elution buffer.

GENE INFORMATION

Gene Name [ACAN aggrecan \[Homo sapiens \]](#)

Official Symbol [ACAN](#)

Synonyms ACAN; aggrecan; AGC1, aggrecan 1, chondroitin sulfate proteoglycan 1, CSPG1, MSK16; aggrecan core protein; aggrecan proteoglycan; CSPGCP; large aggregating proteoglycan; cartilage-specific proteoglycan core protein; chondroitin sulfate proteoglycan core protein 1; AGC1; SEDK; AGCAN; CSPG1; MSK16;

Gene ID [176](#)

mRNA Refseq [NM_001135](#)

Protein Refseq [NP_001126](#)

MIM [155760](#)

UniProt ID [P16112](#)

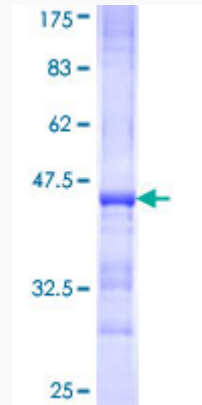
 Tel: 1-631-559-9269 1-516-512-3133

 Email: info@creative-biomart.com  Fax: 1-631-938-8127

 45-1 Ramsey Road, Shirley, NY 11967, USA

Quality Control

Testing:



12.5% SDS-PAGE Stained with Coomassie Blue.

 Tel: 1-631-559-9269 1-516-512-3133

 Email: info@creative-biomart.com  Fax: 1-631-938-8127

 45-1 Ramsey Road, Shirley, NY 11967, USA