

Recombinant Human ACAT2 Protein, GST-Tagged

Cat. No. ACAT2-144H Lot. No. (See product label)

SPECIFICATION

Product Overview	Human ACAT2 partial ORF (NP_005882, 104 a.a. - 213 a.a.) recombinant protein with GST-tag at N-terminal.
Species	Human
Source	Wheat Germ
Description	The product of this gene is an enzyme involved in lipid metabolism, and it encodes cytosolic acetoacetyl-CoA thiolase. This gene shows complementary overlapping with the 3-prime region of the TCP1 gene in both mouse and human. These genes are encoded on opposite strands of DNA, as well as in opposite transcriptional orientation. Alternatively spliced transcript variants encoding different isoforms have been found for this gene. [provided by RefSeq, Dec 2014]
Molecular Mass	37.84 kDa
AA Sequence	QSIGIGDSSIVVAGGMENMSKAPHLAYLRTGVKIGEMPLTDSILCDGLTDAFHNCHE GITAENVATKWQVSREDQDKVAVLSQNRTEAQAQKAGHFDKEIVPVLVSTRKGL
Applications	Enzyme-linked Immunoabsorbent Assay Western Blot (Recombinant protein) Antibody Production Protein Array
Notes	Best use within three months from the date of receipt of this protein.

 Tel: 1-631-559-9269 1-516-512-3133

 Email: info@creative-biomart.com  Fax: 1-631-938-8127

 45-1 Ramsey Road, Shirley, NY 11967, USA

Storage Store at -80 centigrade. Aliquot to avoid repeated freezing and thawing.

Storage Buffer 50 mM Tris-HCl, 10 mM reduced Glutathione, pH=8.0 in the elution buffer.

GENE INFORMATION

Gene Name [ACAT2 acetyl-CoA acetyltransferase 2 \[Homo sapiens \]](#)

Official Symbol [ACAT2](#)

Synonyms ACAT2; acetyl-CoA acetyltransferase 2; acetyl Coenzyme A acetyltransferase 2 , acetyl Coenzyme A acetyltransferase 2 (acetoacetyl Coenzyme A thiolase); acetyl-CoA acetyltransferase, cytosolic; acetoacetyl Coenzyme A thiolase; cytosolic acetoacetyl-CoA thiolase; acetyl-CoA transferase-like protein;

Gene ID [39](#)

mRNA Refseq [NM_005891](#)

Protein Refseq [NP_005882](#)

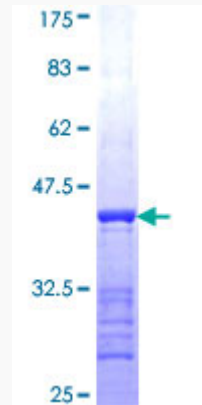
MIM [100678](#)

UniProt ID [Q9BWD1](#)

 Tel: 1-631-559-9269 1-516-512-3133

 Email: info@creative-biomart.com  Fax: 1-631-938-8127

 45-1 Ramsey Road, Shirley, NY 11967, USA



12.5% SDS-PAGE Stained with Coomassie Blue.

 Tel: 1-631-559-9269 1-516-512-3133

 Email: info@creative-biomart.com  Fax: 1-631-938-8127

 45-1 Ramsey Road, Shirley, NY 11967, USA