

Recombinant Human ACBD6 Protein, GST-Tagged

Cat. No. ACBD6-150H Lot. No. (See product label)

SPECIFICATION

Product Overview Human ACBD6 full-length ORF (NP_115736.1, 1 a.a. - 282 a.a.) recombinant protein with GST-tag at N-terminal.

Species Human

Source Wheat Germ

Description ACBD6 (Acyl-CoA Binding Domain Containing 6) is a Protein Coding gene. Among its related pathways are Metabolism and Fatty Acyl-CoA Biosynthesis. GO annotations related to this gene include lipid binding and fatty-acyl-CoA binding.

Molecular Mass 61.2 kDa

AA Sequence
MGTEKESPEPDCQKQFQAAVSVIQNLPKNGSYRPSYEEMLRFYSSYYKQATMGPCLVPRPGFWDPIGRYKWDANSLGKMSREEAMSAYITEMKLVAQKVIDTVPLGEVAEDMFGYFEPLYQVIPDMRPPETFLRRVTGWKEQVVNGDVGAVSEPPCLPKEPAPPSPESHSPRDLDSSEVFCDSLEQLEPELVWTEQRAASGGKRDPRNSVPPTKKEGLRGSPPGPQELDVWLLGTVRALQESMQEVQARVQSLESMPRPPEQRPQPRPSARPWPLGLPGPALLFFLLWPFVQWLFRMFRTQKR

Applications
Enzyme-linked Immunoabsorbent Assay
Western Blot (Recombinant protein)
Antibody Production
Protein Array

 Tel: 1-631-559-9269 1-516-512-3133

 Email: info@creative-biomart.com  Fax: 1-631-938-8127

 45-1 Ramsey Road, Shirley, NY 11967, USA

Notes	Best use within three months from the date of receipt of this protein.
Storage	Store at -80 centigrade. Aliquot to avoid repeated freezing and thawing.
Storage Buffer	50 mM Tris-HCl, 10 mM reduced Glutathione, pH=8.0 in the elution buffer.

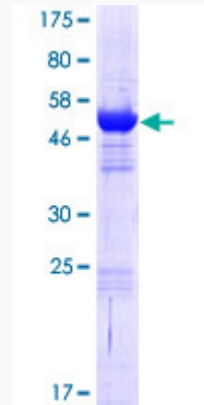
GENE INFORMATION

Gene Name	ACBD6 acyl-CoA binding domain containing 6 [Homo sapiens]
Official Symbol	ACBD6
Synonyms	ACBD6; acyl-CoA binding domain containing 6; acyl Coenzyme A binding domain containing 6; acyl-CoA-binding domain-containing protein 6; MGC2404; acyl-Coenzyme A binding domain containing 6;
Gene ID	84320
mRNA Refseq	NM_032360
Protein Refseq	NP_115736
UniProt ID	Q9BR61

 Tel: 1-631-559-9269 1-516-512-3133

 Email: info@creative-biomart.com  Fax: 1-631-938-8127

 45-1 Ramsey Road, Shirley, NY 11967, USA



12.5% SDS-PAGE Stained with Coomassie Blue.

Tel: 1-631-559-9269 1-516-512-3133

Email: info@creative-biomart.com Fax: 1-631-938-8127

45-1 Ramsey Road, Shirley, NY 11967, USA