

Recombinant Human ACD protein, His & T7-tagged

Cat. No. ACD-1657H **Lot. No.** (See product label)

SPECIFICATION

Product Overview	Recombinant Human ACD aa. (Glu244~Pro432 (Accession # Q96AP0)) fused with N-terminal His & T7 tag was produced in E. coli cells.
Species	Human
Source	E.coli
ProteinLength	Glu244~Pro432
Description	This gene encodes a protein that is involved in telomere function. This protein is one of six core proteins in the telosome/shelterin telomeric complex, which functions to maintain telomere length and to protect telomere ends. Through its interaction with other components, this protein plays a key role in the assembly and stabilization of this complex, and it mediates the access of telomerase to the telomere. Multiple transcript variants encoding different isoforms have been found for this gene. This gene, which is also referred to as TPP1, is distinct from the unrelated TPP1 gene on chromosome 11, which encodes tripeptidyl-peptidase I.
Form	Freeze-dried powder
Molecular Mass	Predicted Molecular Mass: 23.0kDa
Endotoxin	<1.0EU per 1ug (determined by the LAL method)
Purity	>90%

 Tel: 1-631-559-9269 1-516-512-3133

 Email: info@creative-biomart.com  Fax: 1-631-938-8127

 45-1 Ramsey Road, Shirley, NY 11967, USA

Applications	SDS-PAGE; WB; ELISA; IP.
Stability	The thermal stability is described by the loss rate. The loss rate was determined by accelerated thermal degradation test, that is, incubate the protein at 37°C for 48h, and no obvious degradation and precipitation were observed. The loss rate is less than 5% within the expiration date under appropriate storage condition.
Storage	Avoid repeated freeze/thaw cycles. Store at 2-8°C for one month. Aliquot and store at -80°C for 12 months.
Storage buffer	Supplied as lyophilized form in 20mM Tris, 150mM NaCl, pH8.0, containing 1mM EDTA, 1mM DTT, 0.01% sarcosyl, 5% trehalose, and preservative.
Reconstitution	Reconstitute in sterile ddH ₂ O.
Isoelectric Point	4.6

GENE INFORMATION

Gene Name	ACD ACD, shelterin complex subunit and telomerase recruitment factor [Homo sapiens (human)]
Official Symbol	ACD
Synonyms	ACD; ACD, shelterin complex subunit and telomerase recruitment factor; PIP1; PTOP; TPP1; TINT1; adrenocortical dysplasia protein homolog; POT1 and TIN2-interacting protein; TIN2 interacting protein 1; adrenocortical dysplasia homolog
Gene ID	65057
mRNA Refseq	NM_001082486.1

 Tel: 1-631-559-9269 1-516-512-3133

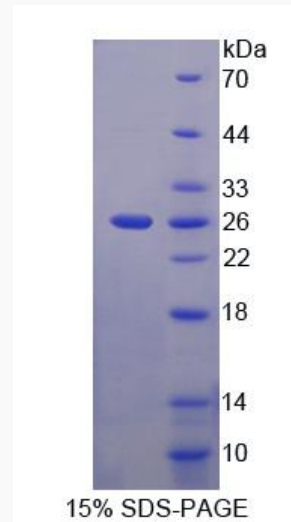
 Email: info@creative-biomart.com  Fax: 1-631-938-8127

 45-1 Ramsey Road, Shirley, NY 11967, USA

Protein Refseq NP_001075955.1

UniProt ID Q96AP0

SDS-PAGE



 Tel: 1-631-559-9269 1-516-512-3133

 Email: info@creative-biomart.com  Fax: 1-631-938-8127

 45-1 Ramsey Road, Shirley, NY 11967, USA