

Recombinant Human ACE Protein, C-His-tagged

Cat. No. ACE-025H Lot. No. (See product label)

SPECIFICATION

Product Overview	Recombinant Human ACE Protein with C-His tag was expressed in E. coli.
Species	Human
Source	E.coli
Description	<p>Angiotensin-converting enzyme (ACE) is a carboxy-terminal dipeptidyl exopeptidase that converts Angiotensin I to the potent vasopressive hormone, Angiotensin II. There are two isoforms of ACE, the pulmonary ACEP and the testicular ACET. ACEP is a glycoprotein expressed in vascular endothelial cells of the lung, liver, adrenal cortex, pancreas, kidney and spleen. The ACET isoform is expressed exclusively in adult testis by developing sperm cells, specifically, late pachytene spermatocytes.</p> <p>Additionally, ACE inactivates bradykinin, a vasodepressor peptide, and is involved in fluid/electrolyte homeostasis. Although it bears significant sequence homology to ACE, ACE2 shows a more restricted pattern of expression. ACE is expressed ubiquitously throughout the vasculature while ACE2 is expressed only in cardiac, renal and testicular cells.</p>
Molecular Mass	~66 kDa
AA Sequence	<p>LDPGLQPGNFSADEAGAQLFAQSYNSSAEQVLFQSVAASWAHDTNITAENARRQE EAALLSQEFAEAWGQKAKELYEPIWQNFTDPQLRRIIGAVRTLGSANLPLAKRQQYN ALLSNMSRIYSTAKVCLPNKTATCWSLDPDLTNILASSRSYAMLLFAWEGWHNAAGI PLKPLYEDFTALSNEAYKQDGFTDTGAYWRSWYNSPTFEDDLEHLYQQLEPLYLNL</p>

 Tel: 1-631-559-9269 1-516-512-3133

 Email: info@creative-biomart.com  Fax: 1-631-938-8127

 45-1 Ramsey Road, Shirley, NY 11967, USA

HAFVRRALHRRYGDYINLRGPIPAHLLGDMWAQSWENIYDMVVPFPDKPNLDVTS
 TMLQQGWNATHMFRVAEEFFTSLELSPMPPEFWEGSMLEKPADGREVVCHASAW
 DFYNRKDFRIKQCTRVTMDQLSTVHHEMGHIQYYLQYKDLPSLRRGANPGFHEAI
 GDVLALS SVSTPEHLHKIGLLDRVTNDTESDINYLKMALEKIAFLPFGYLVDQWRWGV
 FSGRTPPSRYNFDWWYLRTKYQGICPPVTRNETHFDAGAKFHVPNVTPYIRYFVSF
 VLQFQFHEALCKEAGYEGPLHQCDIYRSTKAGAKLRKVLQAGSSRPWQEVLKDMV
 GLDALDAQPLLKYFQPVTQWLQEQQNQQNGEVLGWPEYQWHP

Purity

Transferred into competent cells and the supernatant was purified by NI column affinity chromatography and the purity is > 85% (by SDS-PAGE).

Notes

For research use only, not for use in diagnostic procedure.

Storage

Store at 4 centigrade short term. Aliquot and store at -20 centigrade long term. Avoid freeze-thaw cycles.

Concentration

≥0.5 mg/mL

Storage Buffer

PBS, 4M Urea, pH7.4

GENE INFORMATION

Gene Name

ACE angiotensin I converting enzyme (peptidyl-dipeptidase A) 1 [Homo sapiens (human)]

Official Symbol

ACE

Synonyms

ACE; angiotensin I converting enzyme (peptidyl-dipeptidase A) 1; DCP1; angiotensin-converting enzyme; ACE1; CD143; kinase II; peptidase P; CD143 antigen; testicular ECA; carboxycathepsin; dipeptidyl carboxypeptidase 1; dipeptidyl carboxypeptidase I; angiotensin converting enzyme, somatic isoform; DCP; ICH; MVCD3;

 Tel: 1-631-559-9269 1-516-512-3133

 Email: info@creative-biomart.com  Fax: 1-631-938-8127

 45-1 Ramsey Road, Shirley, NY 11967, USA

Gene ID 1636

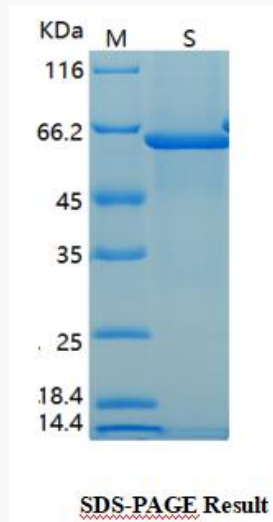
mRNA Refseq NM_000789

Protein Refseq NP_000780

MIM 106180

UniProt ID P12821

SDS-PAGE



 Tel: 1-631-559-9269 1-516-512-3133

 Email: info@creative-biomart.com  Fax: 1-631-938-8127

 45-1 Ramsey Road, Shirley, NY 11967, USA