

Recombinant Human ACE Protein, GST-Tagged

Cat. No. ACE-155H Lot. No. (See product label)

SPECIFICATION

Product Overview	Human ACE partial ORF (AAH36375, 592 a.a. - 701 a.a.) recombinant protein with GST-tag at N-terminal.
Species	Human
Source	Wheat Germ
Description	This gene encodes an enzyme involved in catalyzing the conversion of angiotensin I into a physiologically active peptide angiotensin II. Angiotensin II is a potent vasopressor and aldosterone-stimulating peptide that controls blood pressure and fluid-electrolyte balance. This enzyme plays a key role in the renin-angiotensin system. Many studies have associated the presence or absence of a 287 bp Alu repeat element in this gene with the levels of circulating enzyme or cardiovascular pathophysiology. Multiple alternatively spliced transcript variants encoding different isoforms have been identified, and two most abundant spliced variants encode the somatic form and the testicular form, respectively, that are equally active. [provided by RefSeq, May 2010]
Molecular Mass	61.2 kDa
AA Sequence	MGTEKESPEPDCQKQFQAAVSVIQNLPKNGSYRPSYEEMLRFYSSYYKQATMGPCLVPRPGFWDPIGRYKWDANSLGKMSREEAMSAYITEMKLVAQKVIDTVPLGEVAEDMFGYFEPLYQVIPDMPRPPEFLRRVTGWKEQVVNGDVGAVSEPPCLPKPEAPPSPESHSPRDL DSEVFCDSLEQLPELVWTEQRAASGGKRDPRNSVPPTKKEGLRGS

 Tel: 1-631-559-9269 1-516-512-3133

 Email: info@creative-biomart.com  Fax: 1-631-938-8127

 45-1 Ramsey Road, Shirley, NY 11967, USA

PPGPQELDVWLLGTVRALQESMQEVQARVQSLESMPRPPEQRQPQRPSARPWPL
GLPGPALLFFLLWPFVQWLFRMFRTQKR

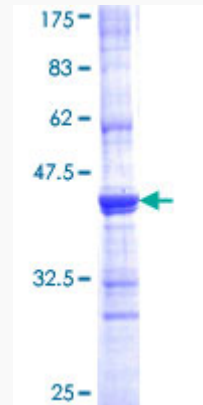
Applications	<p>Enzyme-linked Immunoabsorbent Assay</p> <p>Western Blot (Recombinant protein)</p> <p>Antibody Production</p> <p>Protein Array</p>
Notes	Best use within three months from the date of receipt of this protein.
Storage	Store at -80 centigrade. Aliquot to avoid repeated freezing and thawing.
Storage Buffer	50 mM Tris-HCl, 10 mM reduced Glutathione, pH=8.0 in the elution buffer.

GENE INFORMATION

Gene Name	ACE angiotensin I converting enzyme (peptidyl-dipeptidase A) 1 [Homo sapiens]
Official Symbol	ACE
Synonyms	ACE; angiotensin I converting enzyme (peptidyl-dipeptidase A) 1; DCP1; angiotensin-converting enzyme; ACE1; CD143; kininase II; peptidase P; CD143 antigen; testicular ECA; carboxycathepsin; dipeptidyl carboxypeptidase 1; dipeptidyl carboxypeptidase I; angiotensin converting enzyme, somatic isoform; DCP; ICH; MVCD3;
Gene ID	1636
mRNA Refseq	NM_000789
Protein Refseq	NP_000780

MIM 106180

UniProt ID P12821



12.5% SDS-PAGE Stained with Coomassie Blue.

Tel: 1-631-559-9269 1-516-512-3133

Email: info@creative-biomart.com Fax: 1-631-938-8127

45-1 Ramsey Road, Shirley, NY 11967, USA