

Active Recombinant Human ACE2 Protein, His-tagged, Alexa Fluor® 488 conjugated

Cat. No. ACE-31H Lot. No. (See product label)

SPECIFICATION

Product Overview

Recombinant Human Alexa Fluor® 488 ACE-2 (Gln18-Ser740) protein with a C-terminal 10-His tag was expressed in Mammalian Cells.

Species

Human

Source

NS0

ProteinLength

18-740 a.a.

Description

The protein encoded by this gene belongs to the angiotensin-converting enzyme family of dipeptidyl carboxydipeptidases and has considerable homology to human angiotensin 1 converting enzyme. This secreted protein catalyzes the cleavage of angiotensin I into angiotensin 1-9, and angiotensin II into the vasodilator angiotensin 1-7. ACE2 is known to be expressed in various human organs, and its organ- and cell-specific expression suggests that it may play a role in the regulation of cardiovascular and renal function, as well as fertility. In addition, the encoded protein is a functional receptor for the spike glycoprotein of the human coronavirus HCoV-NL63 and the human severe acute respiratory syndrome coronaviruses, SARS-CoV and SARS-CoV-2, the latter is the causative agent of coronavirus disease-2019 (COVID-19). Multiple splice variants have been found for this gene and the dACE2 (or MIRb-ACE2) splice variant has been found to be interferon inducible.

Form

Recombinant Human ACE2 is prone to proteolytic cleavage at C-terminus. The

 Tel: 1-631-559-9269 1-516-512-3133

 Email: info@creative-biomart.com  Fax: 1-631-938-8127

 45-1 Ramsey Road, Shirley, NY 11967, USA

	<p>predominant form of the purified protein lacks the His tag.</p> <p>Labeled with Alexa Fluor[®] 488 via amines</p> <p>Excitation Wavelength: 488 nm</p> <p>Emission Wavelength: 515-545 nm</p>
Bio-activity	<p>Measured by flow cytometry for its ability to bind Biotinylated Recombinant SARS-CoV-2 Spike RBD Fc Chimera Avi-tag conjugated streptavidin beads at 0.37-3.33 µg/mL (100 µL/well).</p>
Molecular Mass	85 kDa
N-terminal Sequence Analysis	No results obtained: Gln18 predicted
Endotoxin	< 1.0 EU/ µg of the protein by the LAL method.
Purity	> 90% by SDS-PAGE under reducing conditions and visualized by silver stain.
Storage	<p>Protect from light. Use a manual defrost freezer and avoid repeated freeze-thaw cycles.</p> <p>6 months from date of receipt, -20 to -70 centigrade as supplied.</p> <p>1 month, 2 to 8 centigrade under sterile conditions after opening.</p> <p>3 months, -20 to -70 centigrade under sterile conditions after opening.</p>
Storage Buffer	Supplied as a 0.2 µm filtered solution in Tris, NaCl, ZnCl ₂ and Glycerol with BSA as a carrier protein.
Shipping	The product is shipped with dry ice or equivalent.
Conjugation	Alexa Fluor 488

 Tel: 1-631-559-9269 1-516-512-3133

 Email: info@creative-biomart.com  Fax: 1-631-938-8127

 45-1 Ramsey Road, Shirley, NY 11967, USA

GENE INFORMATION

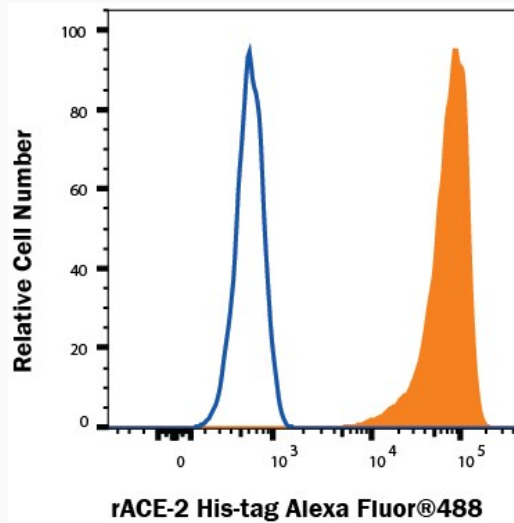
Gene Name	ACE2 angiotensin converting enzyme 2 [Homo sapiens (human)]
Official Symbol	ACE2 angiotensin converting enzyme 2 [Homo sapiens (human)]
Synonyms	ACE2; angiotensin converting enzyme 2; ACEH; angiotensin-converting enzyme 2; ACE-related carboxypeptidase; angiotensin I converting enzyme (peptidyl-dipeptidase A) 2; angiotensin I converting enzyme 2; angiotensin-converting enzyme homolog; angiotensin-converting enzyme-related carboxypeptidase; metalloprotease MPROT15; peptidyl-dipeptidase A; truncated angiotensin converting enzyme 2; EC 3.4.17.23
Gene ID	59272
mRNA Refseq	NM_021804
Protein Refseq	NP_068576
MIM	300335
UniProt ID	Q9BYF1

 Tel: 1-631-559-9269 1-516-512-3133

 Email: info@creative-biomart.com  Fax: 1-631-938-8127

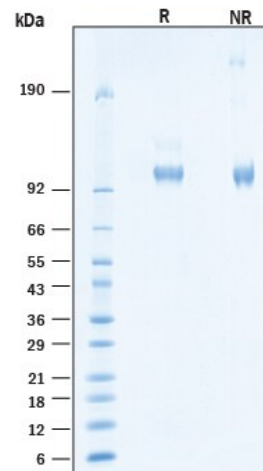
 45-1 Ramsey Road, Shirley, NY 11967, USA

FC




Streptavidin beads conjugated to Biotinylated Recombinant SARS-CoV-2 Spike RBD Fc Chimera Avi-tag were stained with Recombinant Human ACE-2 His-tag Alexa Fluor® 488 Protein or unstained (open histogram).


SDS-PAGE



2

 Tel: 1-631-559-9269 1-516-512-3133

 Email: info@creative-biomart.com  Fax: 1-631-938-8127

 45-1 Ramsey Road, Shirley, NY 11967, USA



µg/lane of Recombinant Human ACE-2 His-tag Alexa Fluor® 488 Protein was resolved with SDS-PAGE under reducing (R) and non-reducing (NR) conditions and visualized by Coomassie® Blue staining, showing bands at 101-111 kDa.

☎ Tel: 1-631-559-9269 1-516-512-3133

☎ Email: info@creative-biomart.com ☎ Fax: 1-631-938-8127

☎ 45-1 Ramsey Road, Shirley, NY 11967, USA