

# Active Recombinant Human ACE2 Protein, His-tagged, Alexa Fluor® 647 conjugated

Cat. No. ACE-32H Lot. No. (See product label)

## SPECIFICATION

### Product Overview

Recombinant Human Alexa Fluor® 647 ACE-2 (Gln18-Ser740) protein with a C-terminal 10-His tag was expressed in Mammalian Cells.

### Species

Human

### Source

NS0

### ProteinLength

18-740 a.a.

### Description

The protein encoded by this gene belongs to the angiotensin-converting enzyme family of dipeptidyl carboxydipeptidases and has considerable homology to human angiotensin 1 converting enzyme. This secreted protein catalyzes the cleavage of angiotensin I into angiotensin 1-9, and angiotensin II into the vasodilator angiotensin 1-7. ACE2 is known to be expressed in various human organs, and its organ- and cell-specific expression suggests that it may play a role in the regulation of cardiovascular and renal function, as well as fertility. In addition, the encoded protein is a functional receptor for the spike glycoprotein of the human coronavirus HCoV-NL63 and the human severe acute respiratory syndrome coronaviruses, SARS-CoV and SARS-CoV-2, the latter is the causative agent of coronavirus disease-2019 (COVID-19). Multiple splice variants have been found for this gene and the dACE2 (or MIRb-ACE2) splice variant has been found to be interferon inducible.

### Form

Recombinant Human ACE2 is prone to proteolytic cleavage at C-terminus. The

 Tel: 1-631-559-9269 1-516-512-3133

 Email: [info@creative-biomart.com](mailto:info@creative-biomart.com)  Fax: 1-631-938-8127

 45-1 Ramsey Road, Shirley, NY 11967, USA



	<p>predominant form of the purified protein lacks the His tag. Labeled with Alexa Fluor® 647 Excitation Wavelength: 650 nm Emission Wavelength: 668 nm</p>
<b>Bio-activity</b>	<p>Measured by flow cytometry for its ability to bind Biotinylated Recombinant SARS-CoV-2 Spike RBD Fc Chimera Avi-tag conjugated streptavidin beads at 0.37-3.33 µg/mL (100 µL/well).</p>
<b>Molecular Mass</b>	<p>85 kDa</p>
<b>N-terminal Sequence Analysis</b>	<p>No results obtained: Gln18 predicted</p>
<b>Endotoxin</b>	<p>&lt; 1.0 EU/ µg of the protein by the LAL method.</p>
<b>Purity</b>	<p>&gt; 90% by SDS-PAGE under reducing conditions and visualized by silver stain.</p>
<b>Storage</b>	<p>Protect from light. Use a manual defrost freezer and avoid repeated freeze-thaw cycles. 6 months from date of receipt, -20 to -70 centigrade as supplied. 1 month, 2 to 8 centigrade under sterile conditions after opening. 3 months, -20 to -70 centigrade under sterile conditions after opening.</p>
<b>Storage Buffer</b>	<p>Supplied as a 0.2 µm filtered solution in Tris, NaCl, ZnCl<sub>2</sub> and Glycerol with BSA as a carrier protein.</p>
<b>Shipping</b>	<p>The product is shipped with dry ice or equivalent.</p>
<b>Conjugation</b>	<p>Alexa Fluor 647</p>

Tel: 1-631-559-9269 1-516-512-3133

Email: [info@creative-biomart.com](mailto:info@creative-biomart.com) Fax: 1-631-938-8127

45-1 Ramsey Road, Shirley, NY 11967, USA

## GENE INFORMATION

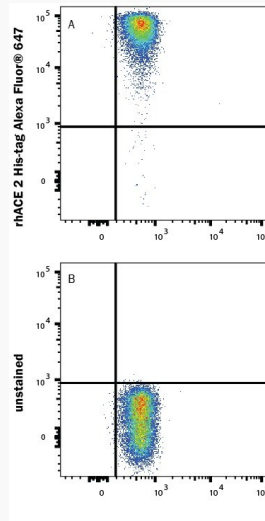
<b>Gene Name</b>	ACE2 angiotensin converting enzyme 2 [ Homo sapiens (human) ]
<b>Official Symbol</b>	ACE2 angiotensin converting enzyme 2 [ Homo sapiens (human) ]
<b>Synonyms</b>	ACE2; angiotensin converting enzyme 2; ACEH; angiotensin-converting enzyme 2; ACE-related carboxypeptidase; angiotensin I converting enzyme (peptidyl-dipeptidase A) 2; angiotensin I converting enzyme 2; angiotensin-converting enzyme homolog; angiotensin-converting enzyme-related carboxypeptidase; metalloprotease MPROT15; peptidyl-dipeptidase A; truncated angiotensin converting enzyme 2; EC 3.4.17.23
<b>Gene ID</b>	59272
<b>mRNA Refseq</b>	NM_021804
<b>Protein Refseq</b>	NP_068576
<b>MIM</b>	300335
<b>UniProt ID</b>	Q9BYF1

 Tel: 1-631-559-9269 1-516-512-3133

 Email: [info@creative-biomart.com](mailto:info@creative-biomart.com)  Fax: 1-631-938-8127

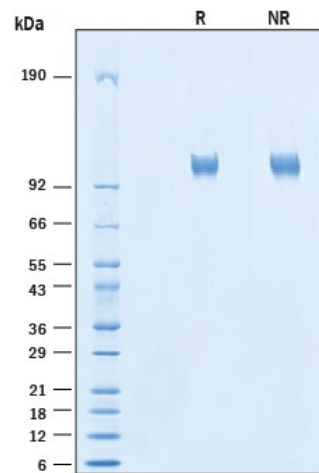
 45-1 Ramsey Road, Shirley, NY 11967, USA

FC



Streptavidin beads conjugated to Biotinylated Recombinant SARS-CoV-2 Spike RBD Fc Chimera Avi-tag were stained with (A) Recombinant Human ACE 2 His-tag Alexa Fluor® 647 Protein or (B) unstained.

SDS-PAGE



2

Tel: 1-631-559-9269 1-516-512-3133

Email: [info@creative-biomart.com](mailto:info@creative-biomart.com) Fax: 1-631-938-8127

45-1 Ramsey Road, Shirley, NY 11967, USA



µg/lane of Recombinant Human ACE-2 His-tag Alexa Fluor® 647 Protein was resolved with SDS-PAGE under reducing (R) and non-reducing (NR) conditions and visualized by Coomassie® Blue staining, showing bands at 101-111 kDa.

 Tel: 1-631-559-9269 1-516-512-3133

 Email: [info@creative-biomart.com](mailto:info@creative-biomart.com)  Fax: 1-631-938-8127

 45-1 Ramsey Road, Shirley, NY 11967, USA