

## Recombinant Human ACE protein, His & GST-tagged

**Cat. No.** ACE-509H    **Lot. No.** (See product label)

### SPECIFICATION

<b>Product Overview</b>	Recombinant Human ACE (P12821) aa. (Arg814~Gln1071) fused with N-terminal His & GST tag was produced in E. coli cells.
<b>Species</b>	Human
<b>Source</b>	E.coli
<b>ProteinLength</b>	Arg814~Gln1071
<b>Description</b>	This gene encodes an enzyme involved in catalyzing the conversion of angiotensin I into a physiologically active peptide angiotensin II. Angiotensin II is a potent vasopressor and aldosterone-stimulating peptide that controls blood pressure and fluid-electrolyte balance. This enzyme plays a key role in the renin-angiotensin system. Many studies have associated the presence or absence of a 287 bp Alu repeat element in this gene with the levels of circulating enzyme or cardiovascular pathophysiologies. Multiple alternatively spliced transcript variants encoding different isoforms have been identified, and two most abundant spliced variants encode the somatic form and the testicular form, respectively, that are equally active.
<b>Form</b>	Freeze-dried powder
<b>Molecular Mass</b>	60kDa as determined by SDS-PAGE reducing conditions.
<b>Endotoxin</b>	<1.0EU per 1g (determined by the LAL method)

 Tel: 1-631-559-9269    1-516-512-3133

 Email: [info@creative-biomart.com](mailto:info@creative-biomart.com)     Fax: 1-631-938-8127

 45-1 Ramsey Road, Shirley, NY 11967, USA

<b>Purity</b>	> 95%
<b>Characteristic</b>	The isoelectric point is 5.9.
<b>Applications</b>	Positive Control; Immunogen; SDS-PAGE; WB
<b>Stability</b>	The thermal stability is described by the loss rate. The loss rate was determined by accelerated thermal degradation test, that is, incubate the protein at 37°C for 48h, and no obvious degradation and precipitation were observed. The loss rate is less than 5% within the expiration date under appropriate storage condition.
<b>Storage</b>	Avoid repeated freeze/thaw cycles. Store at 2-8°C for one month. Aliquot and store at -80°C for 12 months.
<b>Concentration</b>	200g/mL
<b>Storage buffer</b>	10mM PBS, pH7.4, containing 1mM DTT, 5% trehalose, 0.01% sarcosyl and Proclin300.
<b>Reconstitution</b>	Reconstitute in 10mM PBS (pH7.4) to a concentration of 0.1-1.0 mg/mL. Do not vortex.

## GENE INFORMATION

<b>Gene Name</b>	ACE angiotensin I converting enzyme [ Homo sapiens (human) ]
<b>Official Symbol</b>	ACE
<b>Synonyms</b>	ACE; angiotensin I converting enzyme; DCP; ACE1; DCP1; CD143; angiotensin-converting enzyme; CD143 antigen; angiotensin I converting enzyme (peptidyl-dipeptidase A) 1; angiotensin converting enzyme, somatic isoform; carboxycathepsin;

 Tel: 1-631-559-9269 1-516-512-3133

 Email: [info@creative-biomart.com](mailto:info@creative-biomart.com)  Fax: 1-631-938-8127

 45-1 Ramsey Road, Shirley, NY 11967, USA

dipeptidyl carboxypeptidase 1; dipeptidyl carboxypeptidase I; kininase II; peptidase P  
;

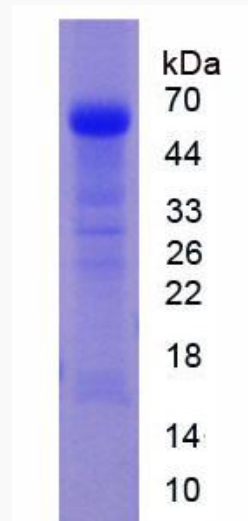
**Gene ID** 1636

**mRNA Refseq** NM\_000789.3

**Protein Refseq** NP\_000780.1

**UniProt ID** P12821

**SDS-PAGE**



 Tel: 1-631-559-9269 1-516-512-3133

 Email: [info@creative-biomart.com](mailto:info@creative-biomart.com)  Fax: 1-631-938-8127

 45-1 Ramsey Road, Shirley, NY 11967, USA