

Recombinant Human ACE2 Protein (Gln18-Ser740), C-His-tagged

Cat. No. ACE2-0076H Lot. No. (See product label)

SPECIFICATION

Product Overview	Recombinant human ACE2 (Gln18-Ser740) was fused with the C-terminal His tag and was expressed in Mammalian cells.
Species	Human
Source	Mammalian Cells
ProteinLength	Gln18-Ser740
Form	Lyophilized powder/frozen liquid
Molecular Mass	79.53 kDa
Purity	>90% as determined by SDS-PAGE
Notes	For research use only.
Storage	Use a manual defrost freezer and avoid repeated freeze thaw cycles. Store at 2 to 8 centigrade for one week. Store at -20 to -80 centigrade for twelve months from the date of receipt.
Storage Buffer	Lyophilized from PBS pH 7.4, 1mM EDTA, 4% trehalose, 1% mannitol.
Reconstitution	Reconstitute in sterile water for a stock solution.

 Tel: 1-631-559-9269 1-516-512-3133

 Email: info@creative-biomart.com  Fax: 1-631-938-8127

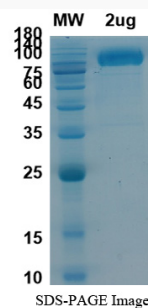
 45-1 Ramsey Road, Shirley, NY 11967, USA

Shipping

They are shipped out with dry ice/blue ice unless customers require otherwise.

GENE INFORMATION

Gene Name	ACE2 angiotensin I converting enzyme (peptidyl-dipeptidase A) 2 [Homo sapiens (human)]
Official Symbol	ACE2
Synonyms	ACE2; angiotensin I converting enzyme (peptidyl-dipeptidase A) 2; angiotensin-converting enzyme 2; metalloprotease MPROT15; ACE-related carboxypeptidase; angiotensin I converting enzyme 2; angiotensin-converting enzyme homolog; ACEH;
Gene ID	59272
mRNA Refseq	NM_021804
Protein Refseq	NP_068576
MIM	300335
UniProt ID	Q9BYF1

SDS-PAGE


Tel: 1-631-559-9269 1-516-512-3133

Email: info@creative-biomart.com Fax: 1-631-938-8127

45-1 Ramsey Road, Shirley, NY 11967, USA