

## Recombinant Dog ACE2 Protein, Fc-tagged

Cat. No. ACE2-032D Lot. No. (See product label)

### SPECIFICATION

<b>Product Overview</b>	Recombinant Dog ACE2 Protein (18-739) was expressed in CHO cells using a C-terminal Fc tag.
<b>Species</b>	Dog
<b>Source</b>	CHO
<b>ProteinLength</b>	18-739
<b>Description</b>	<p>The protein encoded by this gene belongs to the angiotensin-converting enzyme family of dipeptidyl carboxydipeptidases and has considerable homology to human angiotensin 1 converting enzyme. This secreted protein catalyzes the cleavage of angiotensin I into angiotensin 1-9, and angiotensin II into the vasodilator angiotensin 1-7. ACE2 is known to be expressed in various human organs, and its organ- and cell-specific expression suggests that it may play a role in the regulation of cardiovascular and renal function, as well as fertility. In addition, the encoded protein is a functional receptor for the spike glycoprotein of the human coronavirus HCoV-NL63 and the human severe acute respiratory syndrome coronaviruses, SARS-CoV and SARS-CoV-2, the latter is the causative agent of coronavirus disease-2019 (COVID-19). Multiple splice variants have been found for this gene and the dACE2 (or MIRb-ACE2) splice variant has been found to be interferon inducible.</p>
<b>Molecular Mass</b>	150 kDa
<b>Purity</b>	> 90%

 Tel: 1-631-559-9269 1-516-512-3133

 Email: [info@creative-biomart.com](mailto:info@creative-biomart.com)  Fax: 1-631-938-8127

 45-1 Ramsey Road, Shirley, NY 11967, USA

<b>Applications</b>	ELISA
<b>Stability</b>	One year at -70 centigrade from date of shipment.
<b>Storage</b>	Store product at -70 centigrade. For optimal storage, aliquot targets into smaller quantities after centrifugation and store at the recommended temperature. For most favorable performance, avoid repeated handling and multiple freeze/thaw cycles.
<b>Concentration</b>	1 µg/µL
<b>Storage Buffer</b>	Recombinant protein stored in 50 mM Tris-HCl, pH 7.5, 90 mM glycine.
<b>Shipping</b>	Dry ice

## GENE INFORMATION

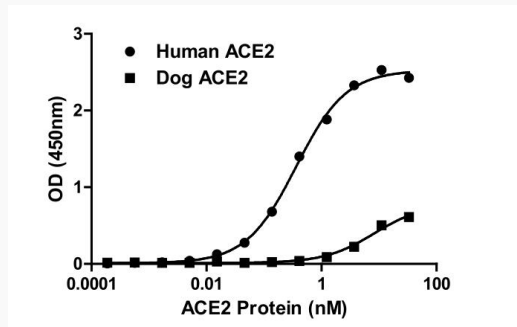
<b>Gene Name</b>	ACE2 angiotensin converting enzyme 2 [ <i>Canis lupus familiaris</i> (dog) ]
<b>Official Symbol</b>	ACE2
<b>Synonyms</b>	ACE2; angiotensin converting enzyme 2; angiotensin-converting enzyme 2; angiotensin I converting enzyme (peptidyl-dipeptidase A) 2; angiotensin I converting enzyme 2; EC 3.4.17.23
<b>Gene ID</b>	480847
<b>mRNA Refseq</b>	NM_001165260
<b>Protein Refseq</b>	NP_001158732
<b>UniProt ID</b>	C7ECV0

 Tel: 1-631-559-9269 1-516-512-3133

 Email: [info@creative-biomart.com](mailto:info@creative-biomart.com)  Fax: 1-631-938-8127

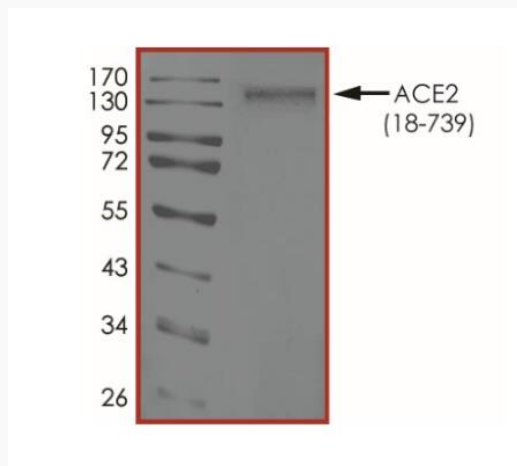
 45-1 Ramsey Road, Shirley, NY 11967, USA

**Activity**



Binding ability measured in a functional ELISA. Unlike human ACE2, Dog ACE2 (18-739) Protein does not bind well to immobilized 2019-nCoV Spike Protein RBD.

**Purity**



The purity of Dog ACE2 (18-793) Protein was determined to be > 90 % by densitometry, approx. MW 150 kDa.