

Recombinant Human ACE2 Protein, Human IgG1 Fc-tagged(C-ter)

Cat. No. ACE2-04H **Lot. No.** (See product label)

SPECIFICATION

Product Overview	Recombinant Human ACE2 Protein with Human IgG1 Fc tag (C-ter) was expressed in CHO.
Species	Human
Source	CHO
Description	The protein encoded by this gene belongs to the angiotensin-converting enzyme family of dipeptidyl carboxydipeptidases and has considerable homology to human angiotensin 1 converting enzyme. This secreted protein catalyzes the cleavage of angiotensin I into angiotensin 1-9, and angiotensin II into the vasodilator angiotensin 1-7. The organ- and cell-specific expression of this gene suggests that it may play a role in the regulation of cardiovascular and renal function, as well as fertility. In addition, the encoded protein is a functional receptor for the spike glycoprotein of the human coronaviruses SARS and HCoV-NL63. [provided by RefSeq, Jul 2008]
Form	Powder
AA Sequence	QSTIEEQAKTFLDKFNHEAEDLFYQSSLASWNYNTNITEENVQNMNAGDKWSAFL KEQSTLAQMYPLQEIQNLTVKLLQLQALQQNGSSVLSSEKSKRLNLTILNTMSTIYSTGK VCNPDNPQECLLLEPGLNEIMANSLDYNERLWAWESWRSEVKGQLRPLYEEYVVL KNEMARANHVEDYGDYWRGDYEVNGVDGYDYSRGLIEDVEHTFEEIKPLYEHLH AYVRAKLMNAYPSYISPIGCLPAHLLGDMWGRFWTNLYSLTVPFGQKPNIDVTDAM

 Tel: 1-631-559-9269 1-516-512-3133

 Email: info@creative-biomart.com  Fax: 1-631-938-8127

 45-1 Ramsey Road, Shirley, NY 11967, USA

VDQAWDAQRIFKEAEKFFVSVGLPNMTQGFWENSMLTDPGNVQKAVCHPTAWDL
 GKGDFRILMCTKVMTDDFLTAHHEMIGHIQYDMAYAAQPFLLRNGANEGFHEAVGEI
 MSLSAATPKHLKSIGLLSPDFQEDNETEINFLKQALTIVGTLPTFTYMLEKWRWVMFK
 GEIPKDQWMKKWWEMKREIVGVVEPVPHDETYCDPASLFHVSNDYSFIRYYTRTLY
 QFQFQEALCQAAKHEGPLHKCDISNSTEAGQKLFNMLRLGKSEPWTALENVVGAK
 NMNVRPLLNYFEPLFTWLKDQNKNSFVGWSTDWSPYADQSIKVRISLKSALGDKAY
 EWNDNEMYLFRSSVAYAMRQYFLKVKNQMILFGEEDVRVANLKPRI SFNFFVTAPK
 NVSDIIPRTEVEKAIRMSRSRINDAFRLNDNSLEFLGIQPTLGPPNQPPVS

Endotoxin	Endotoxin level is less than 0.1 EU/μg of the protein, as determined by the LAL test.
Purity	> 98% (by SDS-PAGE)
Applications	SDS-PAGE
Notes	For laboratory research only, not for drug, diagnostic or other use.
Storage	Lyophilized protein should be stored at -20°C. After reconstitution, aliquot and store at -20°C or -80°C for up to one month. Storage in frost free freezers is not recommended. Avoid repeated freeze/thaw cycles. Suggest spin the vial prior to opening.
Storage Buffer	PBS (pH 7.4)
Reconstitution	It is recommended to reconstitute the lyophilized protein in sterile water to a concentration not less than 100 μg/mL and incubate the stock solution for at least 20 min at room temperature to make sure the protein is dissolved completely.

GENE INFORMATION

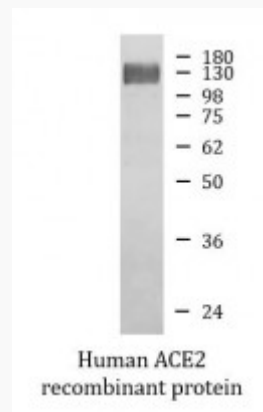
Gene Name ACE2 angiotensin I converting enzyme (peptidyl-dipeptidase A) 2 [Homo sapiens]

 Tel: 1-631-559-9269 1-516-512-3133

 Email: info@creative-biomart.com  Fax: 1-631-938-8127

 45-1 Ramsey Road, Shirley, NY 11967, USA

Official Symbol	ACE2
Synonyms	ACE2; angiotensin I converting enzyme (peptidyl-dipeptidase A) 2; angiotensin-converting enzyme 2; metalloprotease MPROT15; ACE-related carboxypeptidase; angiotensin I converting enzyme 2; angiotensin-converting enzyme homolog; ACEH;
Gene ID	59272
mRNA Refseq	NM_021804
Protein Refseq	NP_068576
MIM	300335
UniProt ID	Q9BYF1

SDS-PAGE


 Tel: 1-631-559-9269 1-516-512-3133

 Email: info@creative-biomart.com  Fax: 1-631-938-8127

 45-1 Ramsey Road, Shirley, NY 11967, USA