

Recombinant Human ACE2 Protein, DYKDDDDK-tagged

Cat. No. ACE2-089H **Lot. No.** (See product label)

SPECIFICATION

Product Overview	Recombinant protein from the full-length sequence of Homo sapiens angiotensin I converting enzyme 2 (ACE2), transcript variant 2 (NM_021804), with a DYKDDDDK tag was expressed in human cells.
Species	Human
Source	Human Cells
Description	The protein encoded by this gene belongs to the angiotensin-converting enzyme family of dipeptidyl carboxydipeptidases and has considerable homology to human angiotensin 1 converting enzyme. This secreted protein catalyzes the cleavage of angiotensin I into angiotensin 1-9, and angiotensin II into the vasodilator angiotensin 1-7. The organ- and cell-specific expression of this gene suggests that it may play a role in the regulation of cardiovascular and renal function, as well as fertility. In addition, the encoded protein is a functional receptor for the spike glycoprotein of the human coronaviruses SARS and HCoV-NL63. [provided by RefSeq, Jul 2008].
Molecular Mass	90.7 kDa
Endotoxin	Endotoxin level is < 0.1 ng/μg of protein (< 1 EU /μg)
Purity	>90% by SDS-PAGE gel and Coomassie Blue staining
Applications	Antigens, Western, ELISA and other in vitro binding or in vivo functional assays, and protein-protein interaction studies; For research & development use only!

 Tel: 1-631-559-9269 1-516-512-3133

 Email: info@creative-biomart.com  Fax: 1-631-938-8127

 45-1 Ramsey Road, Shirley, NY 11967, USA

Storage Buffer Purified protein formulated in a sterile solution of TBS buffer, pH7.4, without any preservatives

GENE INFORMATION

Gene Name [ACE2 angiotensin converting enzyme 2 \[Homo sapiens \(human\) \]](#)

Official Symbol [ACE2](#)

Synonyms

ACE2; angiotensin converting enzyme 2; ACEH; angiotensin-converting enzyme 2; ACE-related carboxypeptidase; angiotensin I converting enzyme (peptidyl-dipeptidase A) 2; angiotensin I converting enzyme 2; angiotensin-converting enzyme homolog; angiotensin-converting enzyme-related carboxypeptidase; metalloprotease MPROT15; peptidyl-dipeptidase A; truncated angiotensin converting enzyme 2; EC 3.4.17.23

Gene ID [59272](#)

mRNA Refseq [NM_021804](#)

Protein Refseq [NP_068576](#)

MIM [300335](#)

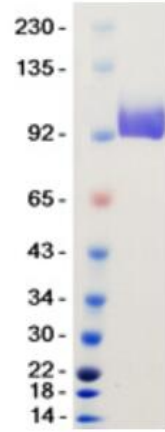
UniProt ID [Q9BYF1](#)

 Tel: 1-631-559-9269 1-516-512-3133

 Email: info@creative-biomart.com  Fax: 1-631-938-8127

 45-1 Ramsey Road, Shirley, NY 11967, USA

SDS-PAGE



 Tel: 1-631-559-9269 1-516-512-3133

 Email: info@creative-biomart.com  Fax: 1-631-938-8127

 45-1 Ramsey Road, Shirley, NY 11967, USA