

Recombinant Human ACE2 protein, hFc-tagged

Cat. No. ACE2-092H **Lot. No.** (See product label)

SPECIFICATION

Product Overview	Recombinant Human ACE2 protein(Q9BYF1-1)(Gln18-Ser740), fused with C-terminal hFc tag, was expressed in HEK293.
Species	Human
Source	HEK293
ProteinLength	Gln18-Ser740
Tag	C-hFc
Form	Lyophilized from 0.22µm filtered solution in PBS (pH 7.4). Normally 5% trehalose is added as protectant before lyophilization.
Bio-activity	Immobilized SARS-COV-2 Spike S (Omicron B.1.1.529) Trimer, His Tag at 2µg/ml (100µl/well) on the plate. Dose response curve for Human ACE2, hFc Tag with the EC50 of 22.9ng/ml determined by ELISA.
Molecular Mass	The protein has a predicted MW of 109.2 kDa. Due to glycosylation, the protein migrates to 115-130 kDa based on Tris-Bis PAGE result.
Endotoxin	Less than 1EU per µg by the LAL method.
Purity	> 95% as determined by Tris-Bis PAGE; > 95% as determined by HPLC

 Tel: 1-631-559-9269 1-516-512-3133

 Email: info@creative-biomart.com  Fax: 1-631-938-8127

 45-1 Ramsey Road, Shirley, NY 11967, USA

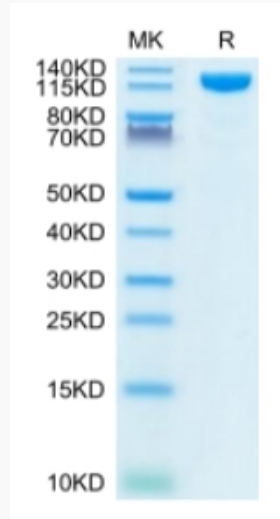
Storage	Reconstituted protein stable at -80°C for 12 months, 4°C for 1 week. Use a manual defrost freezer and avoid repeated freeze-thaw cycles.
Reconstitution	Centrifuge tubes before opening. Reconstituting to a concentration more than 100 µg/ml is recommended. Dissolve the lyophilized protein in distilled water.
GENE INFORMATION	
Gene Name	ACE2 angiotensin I converting enzyme (peptidyl-dipeptidase A) 2 [Homo sapiens]
Official Symbol	ACE2
Synonyms	ACE2; angiotensin I converting enzyme (peptidyl-dipeptidase A) 2; angiotensin-converting enzyme 2; metalloprotease MPROT15; ACE-related carboxypeptidase; angiotensin I converting enzyme 2; angiotensin-converting enzyme homolog; ACEH;
Gene ID	59272
mRNA Refseq	NM_021804
Protein Refseq	NP_068576
MIM	300335
UniProt ID	Q9BYF1

 Tel: 1-631-559-9269 1-516-512-3133

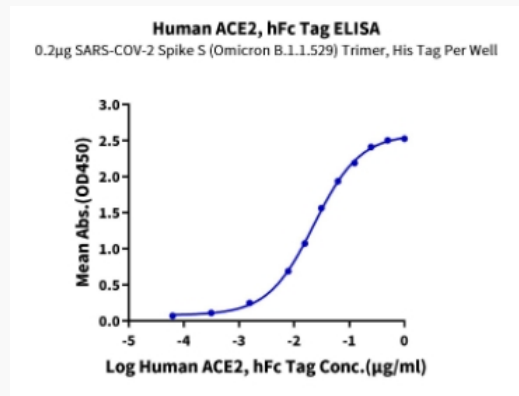
 Email: info@creative-biomart.com  Fax: 1-631-938-8127

 45-1 Ramsey Road, Shirley, NY 11967, USA

Tris-Bis PAGE



ELISA Data



 Tel: 1-631-559-9269 1-516-512-3133

 Email: info@creative-biomart.com  Fax: 1-631-938-8127

 45-1 Ramsey Road, Shirley, NY 11967, USA