

## Recombinant Cynomolgus ACE2 protein, His-tagged

Cat. No. ACE2-108C Lot. No. (See product label)

### SPECIFICATION

<b>Product Overview</b>	Recombinant Cynomolgus ACE2 protein (Gln18-Thr741), fused to His-tag at the N-terminus, was expressed in HEK293.
<b>Species</b>	Cynomolgus
<b>Source</b>	HEK293
<b>ProteinLength</b>	Gln18-Thr741
<b>Description</b>	Angiotensin-converting enzyme 2 (ACE2) is also known as ACEH (ACE homolog), is an integral membrane protein with considerable homologous to ACE, which belongs to the peptidase M2 family. ACE2 is an exopeptidase that catalyses the conversion of angiotensin I to the nonapeptide angiotensin, or the conversion of angiotensin II to angiotensin 1-7. ACE2 may be an important regulator of heart function. In case of human coronaviruses SARS and HCoV-NL63 infections, ACE-2 serve as functional receptor for the spike glycoprotein of both coronaviruses. ACE2 is activated by chloride and fluoride, but not bromide and Inhibited by MLN-4760, cFP_Leu, and EDTA, but not by the ACE inhibitors lisinopril, captopril and enalaprilat. ACE2 is active from pH 6 to 9, and the optimum pH is 6.5 in the presence of 1 M NaCl.
<b>Predicted N Terminal</b>	His
<b>Form</b>	Delivered as bulk protein in a 0.2 µm filtered solution of 50 mM Tris, 150 mM NaCl, Arginine, pH7.5 with glycerol as protectant.

 Tel: 1-631-559-9269 1-516-512-3133

 Email: [info@creative-biomart.com](mailto:info@creative-biomart.com)  Fax: 1-631-938-8127

 45-1 Ramsey Road, Shirley, NY 11967, USA

<b>Molecular Mass</b>	The protein has a calculated MW of 85.7 kDa. The protein migrates as 90-115 kDa under reducing (R) condition (SDS-PAGE) due to glycosylation.
<b>Endotoxin</b>	Less than 1.0 EU per µg by the LAL method.
<b>Purity</b>	>95% as determined by SDS-PAGE.
<b>Storage</b>	Please avoid repeated freeze-thaw cycles. This product is stable after storage at: The product <b>MUST</b> be stored at -70 centigrade or lower upon receipt; -70 centigrade for 3 months under sterile conditions.
<b>Reconstitution</b>	It is recommended that sterile water be added to the vial to prepare a stock solution of 0.2 ug/ul. Centrifuge the vial at 4°C before opening to recover the entire contents.
<b>Shipping</b>	This product is supplied as sterile liquid solution and shipped frozen with dry ice.

## GENE INFORMATION

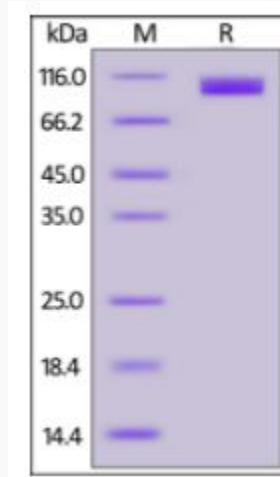
<b>Gene Name</b>	<a href="#">ACE2</a>
<b>Official Symbol</b>	<a href="#">ACE2</a>
<b>Synonyms</b>	angiotensin I converting enzyme 2
<b>Gene ID</b>	<a href="#">102130864</a>
<b>mRNA Refseq</b>	<a href="#">XM_005593037.2</a>
<b>Protein Refseq</b>	<a href="#">XP_005593094.1</a>

 Tel: 1-631-559-9269 1-516-512-3133

 Email: [info@creative-biomart.com](mailto:info@creative-biomart.com)  Fax: 1-631-938-8127

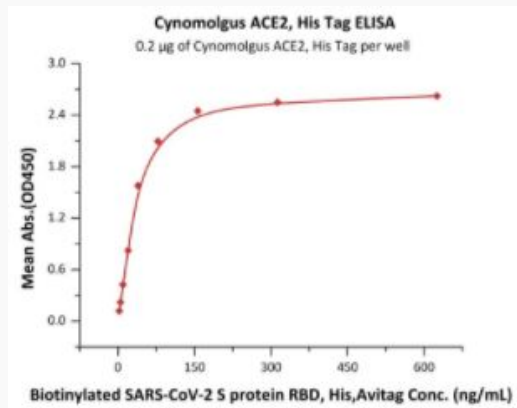
 45-1 Ramsey Road, Shirley, NY 11967, USA

**SDS-PAGE of ACE2-108C**



Cynomolgus ACE2, His Tag on SDS-PAGE under reducing (R) condition. The gel was stained overnight with Coomassie Blue. The purity of the protein is greater than 95%.

**Bioactivity-ELISA of ACE2-108C**



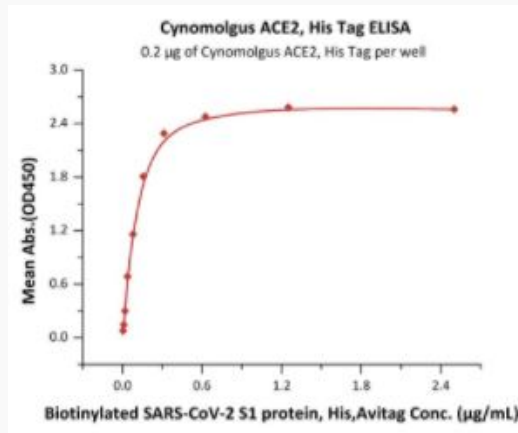
Immobilized Cynomolgus ACE2, His Tag at 2 µg/mL (100 µL/well) can bind Biotinylated SARS-CoV-2 S protein RBD, His, Avitag with a linear range of 2-78 ng/mL (QC tested).

Tel: 1-631-559-9269 1-516-512-3133

Email: [info@creative-biomart.com](mailto:info@creative-biomart.com) Fax: 1-631-938-8127

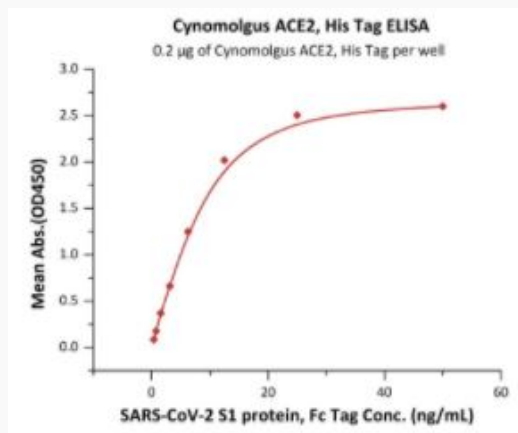
45-1 Ramsey Road, Shirley, NY 11967, USA

**Bioactivity-ELISA of  
ACE2-108C**




Immobilized Cynomolgus ACE2, His Tag at 2 µg/mL (100 µL/well) can bind Biotinylated COVID-19 S1 protein, His,Avitag with a linear range of 0.005-0.313 µg/mL (Routinely tested).


**Bioactivity-ELISA of  
ACE2-108C**



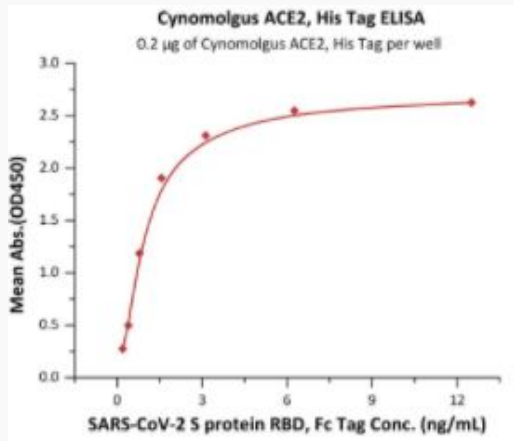
Immobilized Cynomolgus ACE2, His Tag at 2 µg/mL (100 µL/well) can bind COVID-19 S1 protein, Fc Tag with a linear range of 0.4-13 ng/mL (Routinely tested).

 Tel: 1-631-559-9269 1-516-512-3133

 Email: [info@creative-biomart.com](mailto:info@creative-biomart.com)  Fax: 1-631-938-8127

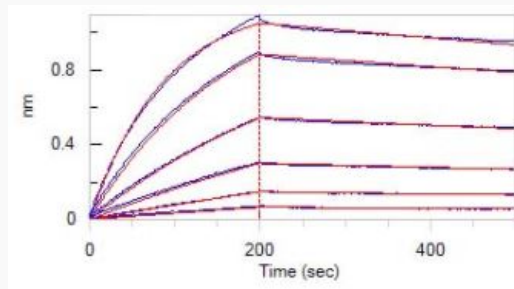
 45-1 Ramsey Road, Shirley, NY 11967, USA

**Bioactivity-ELISA of  
ACE2-108C**




Immobilized Cynomolgus ACE2, His Tag at 2 µg/mL (100 µL/well) can bind COVID-19 S protein RBD, Fc Tag with a linear range of 0.2-2 ng/mL (Routinely tested).


**Bioactivity-BLI of  
ACE2-108C**



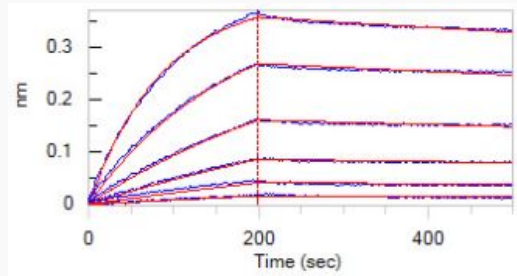
Loaded COVID-19 S protein RBD, Fc Tag on Protein A Biosensor, can bind Cynomolgus ACE2, His Tag with an affinity constant of 4.32 nM as determined in BLI assay (ForteBio Octet Red96e) (Routinely tested).

 Tel: 1-631-559-9269 1-516-512-3133

 Email: [info@creative-biomart.com](mailto:info@creative-biomart.com)  Fax: 1-631-938-8127

 45-1 Ramsey Road, Shirley, NY 11967, USA

**Bioactivity-BLI of  
ACE2-108C**



Loaded COVID-19 S1 protein, Mouse IgG2a Fc Tag on Protein A Biosensor, can bind Cynomolgus ACE2, His Tag with an affinity constant of 3.06 nM as determined in BLI assay (ForteBio Octet Red96e) (Routinely tested).

 Tel: 1-631-559-9269 1-516-512-3133

 Email: [info@creative-biomart.com](mailto:info@creative-biomart.com)  Fax: 1-631-938-8127

 45-1 Ramsey Road, Shirley, NY 11967, USA