

Recombinant Human ACE2 Protein, His-tagged

Cat. No. ACE2-13H Lot. No. (See product label)

SPECIFICATION

Product Overview Recombinant Human Angiotensin-converting enzyme 2 (ACE2) soluble form (Q9BYF1|19-615) with a C-terminal 10xHis-tag was produced in *Nicotiana benthamiana* by Agrobacterium-mediated transient expression.

Species Human

Source *Nicotiana Benthamiana*

ProteinLength 19-615

Description The protein encoded by this gene belongs to the angiotensin-converting enzyme family of dipeptidyl carboxydipeptidases and has considerable homology to human angiotensin 1 converting enzyme. This secreted protein catalyzes the cleavage of angiotensin I into angiotensin 1-9, and angiotensin II into the vasodilator angiotensin 1-7. ACE2 is known to be expressed in various human organs, and its organ- and cell-specific expression suggests that it may play a role in the regulation of cardiovascular and renal function, as well as fertility. In addition, the encoded protein is a functional receptor for the spike glycoprotein of the human coronavirus HCoV-NL63 and the human severe acute respiratory syndrome coronaviruses, SARS-CoV and SARS-CoV-2, the latter is the causative agent of coronavirus disease-2019 (COVID-19). Multiple splice variants have been found for this gene and the dACE2 (or MIRb-ACE2) splice variant has been found to be interferon inducible.

Form Lyophilized

 Tel: 1-631-559-9269 1-516-512-3133

 Email: info@creative-biomart.com  Fax: 1-631-938-8127

 45-1 Ramsey Road, Shirley, NY 11967, USA

Molecular Mass	71.2 kDa (+ Glycosylation)
Purity	95%
Storage	<p>Lyophilized materials are stable for up to twelve months from date of receipt at -70 centigrade.</p> <p>It is recommended that reconstituted protein be aliquoted for optimal storage. Avoid repeated freeze-thaw cycles.</p>
Storage Buffer	20 mM HEPES pH7.5, 300 mM NaCl, 175 mM Trehalose.
GENE INFORMATION	
Gene Name	ACE2 angiotensin converting enzyme 2 [Homo sapiens (human)]
Official Symbol	ACE2
Synonyms	ACE2; angiotensin converting enzyme 2; ACEH; angiotensin-converting enzyme 2; ACE-related carboxypeptidase; angiotensin I converting enzyme (peptidyl-dipeptidase A) 2; angiotensin I converting enzyme 2; angiotensin-converting enzyme homolog; angiotensin-converting enzyme-related carboxypeptidase; metalloprotease MPROT15; peptidyl-dipeptidase A; truncated angiotensin converting enzyme 2; EC 3.4.17.23
Gene ID	59272
mRNA Refseq	NM_021804
Protein Refseq	NP_068576
MIM	300335

 Tel: 1-631-559-9269 1-516-512-3133

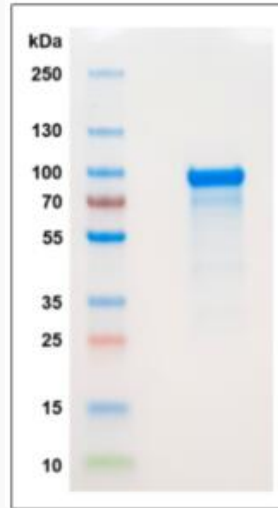
 Email: info@creative-biomart.com  Fax: 1-631-938-8127

 45-1 Ramsey Road, Shirley, NY 11967, USA

UniProt ID

Q9BYF1

SDS-PAGE



Reducing 4-20% SDS-PAGE analysis of 5 g ACE2.

 Tel: 1-631-559-9269 1-516-512-3133

 Email: info@creative-biomart.com  Fax: 1-631-938-8127

 45-1 Ramsey Road, Shirley, NY 11967, USA