

## Recombinant Human ACE2 protein, mFc-tagged

Cat. No. ACE2-2186H Lot. No. (See product label)

### SPECIFICATION

<b>Product Overview</b>	Recombinant Human ACE2 protein(Q9BYF1-1)(Gln 18 - Ser 740) is expressed from HEK293, fused with a mouse IgG1 Fc tag at the C-terminus.
<b>Species</b>	Human
<b>Source</b>	HEK293
<b>ProteinLength</b>	18-740 aa
<b>Form</b>	Supplied as 0.2 µm filtered solution in 50 mM Tris, 150 mM NaCl, Arginine, pH7.5 with glycerol as protectant.
<b>Bio-activity</b>	Immobilized SARS-CoV-2 S protein RBD, His Tag at 1 µg/mL (100 µL/well) can bind Human ACE2, Mouse IgG1 Fc Tag with a linear range of 0.4-6 ng/mL.
<b>Molecular Mass</b>	The protein has a calculated MW of 109.8 kDa. The protein migrates as 125-150 kDa under reducing (R) condition (SDS-PAGE) due to glycosylation.
<b>Endotoxin</b>	Less than 1.0 EU per µg by the LAL method / rFC method.
<b>Purity</b>	>95% as determined by SDS-PAGE.
<b>Storage</b>	Please avoid repeated freeze-thaw cycles. This product is stable after storage at: The product MUST be stored at -70°C or lower upon receipt; -70°C for 3 months under sterile conditions.

 Tel: 1-631-559-9269 1-516-512-3133

 Email: [info@creative-biomart.com](mailto:info@creative-biomart.com)  Fax: 1-631-938-8127

 45-1 Ramsey Road, Shirley, NY 11967, USA

**Concentration** 0.2-1.0 mg/mL.

## GENE INFORMATION

**Gene Name** ACE2 angiotensin I converting enzyme (peptidyl-dipeptidase A) 2 [ Homo sapiens ]

**Official Symbol** ACE2

**Synonyms** ACE2; angiotensin I converting enzyme (peptidyl-dipeptidase A) 2; angiotensin-converting enzyme 2; metalloprotease MPROT15; ACE-related carboxypeptidase; angiotensin I converting enzyme 2; angiotensin-converting enzyme homolog; ACEH;

**Gene ID** 59272

**mRNA Refseq** NM\_021804

**Protein Refseq** NP\_068576

**MIM** 300335

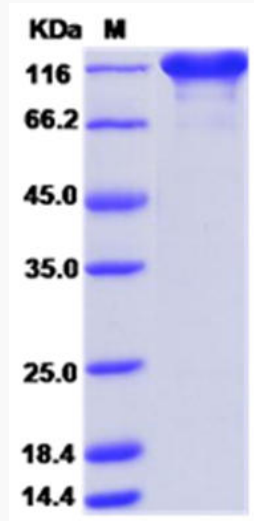
**UniProt ID** Q9BYF1

 Tel: 1-631-559-9269 1-516-512-3133

 Email: [info@creative-biomart.com](mailto:info@creative-biomart.com)  Fax: 1-631-938-8127

 45-1 Ramsey Road, Shirley, NY 11967, USA

**SDS-PAGE**



 Tel: 1-631-559-9269 1-516-512-3133

 Email: [info@creative-biomart.com](mailto:info@creative-biomart.com)  Fax: 1-631-938-8127

 45-1 Ramsey Road, Shirley, NY 11967, USA