

Recombinant Human ACE2 Protein (ECD, AA 20-707), C-Avi/His-Tagged, non-biotinylated

Cat. No. ACE2-24H Lot. No. (See product label)

SPECIFICATION

Product Overview

Recombinant Human ACE2 Protein (ECD, AA 20-707) with C-Avi/His tag (non-biotinylated) was expressed in HEK293.

Species

Human

Source

HEK293

ProteinLength

AA 20-707

Description

The protein encoded by this gene belongs to the angiotensin-converting enzyme family of dipeptidyl carboxydipeptidases and has considerable homology to human angiotensin 1 converting enzyme. This secreted protein catalyzes the cleavage of angiotensin I into angiotensin 1-9, and angiotensin II into the vasodilator angiotensin 1-7. ACE2 is known to be expressed in various human organs, and its organ- and cell-specific expression suggests that it may play a role in the regulation of cardiovascular and renal function, as well as fertility. In addition, the encoded protein is a functional receptor for the spike glycoprotein of the human coronavirus HCoV-NL63 and the human severe acute respiratory syndrome coronaviruses, SARS-CoV and SARS-CoV-2, the latter is the causative agent of coronavirus disease-2019 (COVID-19). Multiple splice variants have been found for this gene and the dACE2 (or MIRb-ACE2) splice variant has been found to be interferon inducible.

Form

Liquid

 Tel: 1-631-559-9269 1-516-512-3133

 Email: info@creative-biomart.com  Fax: 1-631-938-8127

 45-1 Ramsey Road, Shirley, NY 11967, USA

AA Sequence

TIEEQAKTFLDKFNHEAEDLFYQSSLASWNYNTNITEENVQNMNNAGDKWSAFLKE
 QSTLAQMYPLQEIQNLTVKLQLQALQQNGSSVLSSEDKSKRLNTILNTMSTIYSTGKVC
 NPDNPQECLLLEPGLNEIMANSLDYNERLWAWESWRSEVVGKQLRPLYEEYVVLKN
 EMARANHYEDYGDYWRGDYEVNGVDGYDYSRGQLIEDVEHTFEEIKPLYEHLHAY
 VRAKLMNAYPSYISPIGCLPAHLLGDMWGRFWTNLYSLTVPFGQKPNIDVTDAMVD
 QAWDAQRIFKEAEKFFVSVGLPNMTQGFWENSMLTDPGNVQKAVCHPTAWDLGK
 GDFRILMCTKVTMDDFLTAHHEMGHIQYDMAYAAQPFLLRNGANEGFHEAVGEIMS
 LSAATPKHLKSIGLLSPDFQEDNETEINFLKQALTIVGTLPFTYMLEKWRWMVFKGE
 IPKDQWMKKWWEMKREIVGVVEPVPHDETYCDPASLFHVSNDYSFIRYYTRTLYQF
 QFQEALCQAAKHEGPLHKCDISNSTEAGQKLFNMLRLGKSEPWTLAENVVGAKNM
 NVRPLLNYFEPLFTWLKDQNKNSFVGWSTDWSPYADQSIKVRISLKSALGDKAYEW
 NDNEMYLFRSSVAYAMRQYFLKVKNQMILFGCEEDVRVANLKPRISFNFFVTAPKNVS
 DIIPRTEVEKAIRMS

Purity > 90% as determined by SDS-PAGE

Storage Stored and shipped at -80 centigrade

Storage Buffer PBS, pH 7.4

Conjugation Biotin

GENE INFORMATION

Gene Name ACE2 angiotensin I converting enzyme (peptidyl-dipeptidase A) 2 [Homo sapiens]

Official Symbol ACE2

Synonyms ACE2; angiotensin I converting enzyme (peptidyl-dipeptidase A) 2; angiotensin-converting enzyme 2; metalloprotease MPROT15; ACE-related carboxypeptidase; angiotensin I converting enzyme 2; angiotensin-converting enzyme homolog; ACEH

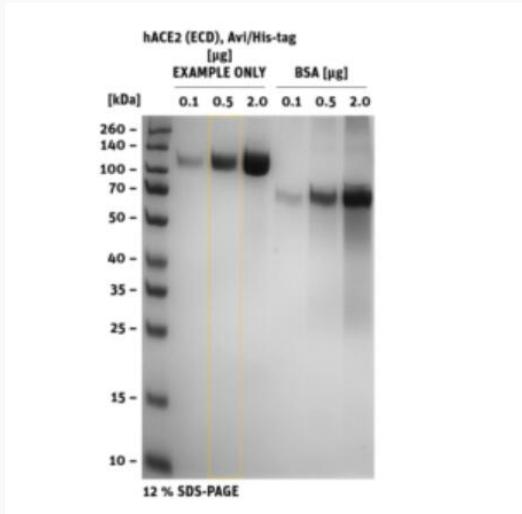
 Tel: 1-631-559-9269 1-516-512-3133

 Email: info@creative-biomart.com  Fax: 1-631-938-8127

 45-1 Ramsey Road, Shirley, NY 11967, USA

Gene ID	59272
mRNA Refseq	NM_021804
Protein Refseq	NP_068576
MIM	300335
UniProt ID	Q9BYF1

SDS-PAGE



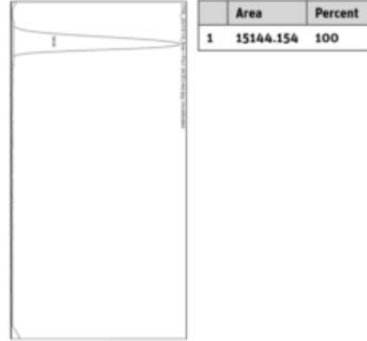
hACE2 (ECD), Avi/His-tag [µg]
 EXAMPLE ONLY BSA [µg]
 [kDa] 0.1 0.5 2.0 0.1 0.5 2.0
 260 -
 140 -
 100 -
 70 -
 50 -
 40 -
 35 -
 25 -
 15 -
 10 -
 12 % SDS-PAGE

Tel: 1-631-559-9269 1-516-512-3133

Email: info@creative-biomart.com Fax: 1-631-938-8127


45-1 Ramsey Road, Shirley, NY 11967, USA

**Histogram of marked
lane in gel picture**



 Tel: 1-631-559-9269 1-516-512-3133

 Email: info@creative-biomart.com  Fax: 1-631-938-8127

 45-1 Ramsey Road, Shirley, NY 11967, USA