

# Recombinant Human ACE2 Protein (ECD, processed, AA 20-708), Tag-free

Cat. No. ACE2-25H Lot. No. (See product label)

## SPECIFICATION

### Product Overview

Recombinant Human ACE2 Protein (ECD, processed, AA 20-708), Tag-free, was expressed in HEK293.

### Species

Human

### Source

HEK293

### ProteinLength

AA 20-708

### Description

The protein encoded by this gene belongs to the angiotensin-converting enzyme family of dipeptidyl carboxydipeptidases and has considerable homology to human angiotensin 1 converting enzyme. This secreted protein catalyzes the cleavage of angiotensin I into angiotensin 1-9, and angiotensin II into the vasodilator angiotensin 1-7. ACE2 is known to be expressed in various human organs, and its organ- and cell-specific expression suggests that it may play a role in the regulation of cardiovascular and renal function, as well as fertility. In addition, the encoded protein is a functional receptor for the spike glycoprotein of the human coronavirus HCoV-NL63 and the human severe acute respiratory syndrome coronaviruses, SARS-CoV and SARS-CoV-2, the latter is the causative agent of coronavirus disease-2019 (COVID-19). Multiple splice variants have been found for this gene and the dACE2 (or MIRb-ACE2) splice variant has been found to be interferon inducible.

### Form

Liquid

 Tel: 1-631-559-9269 1-516-512-3133

 Email: [info@creative-biomart.com](mailto:info@creative-biomart.com)  Fax: 1-631-938-8127

 45-1 Ramsey Road, Shirley, NY 11967, USA

**AA Sequence**

MTIEEQAKTFLDKFNHEAEDLFYQSSLASWNYNTNITEENVQNMNAGDKWSAFLK  
 EQSTLAQMYPLQEIQNLTVKLQLQALQQNGSSVLSSEDKSKRLNTILNTMSTIYSTGKV  
 CNPDNPQECLLLEPGLNEIMANSLDYNERLWAWESWRSEVGKQLRPLYEEYVVLK  
 NEMARANHYEDYGDYWRGDYEVNGVDGYDYSRGQLIEDVEHTFEEIKPLYEHLHA  
 YVRAKLMNAYPSYISPIGCLPAHLLGDMWGRFWTNLYSLTVPFGQKPNIDVTDAMV  
 DQAWDAQRIFKEAEKFFVSVGLPNMTQGFWENSMLTDPGNVQKAVCHPTAWDLG  
 KGDFRILMCTKVTMDDFLTAHHEMGHIQYDMAYAAQPFLLRNGANEGFHEAVGEIM  
 SLSAATPKHLKSIGLLSPDFQEDNETEINFLKQALTIVGTLPFTYMLEKWRWVMVFKG  
 EIPKDQWMKKWWEMKREIVGVVEPVPHDETYCDPASLFHVSNDYSFIRYYTRTLYQ  
 FQFQEALCQAAKHEGPLHKCDISNSTEAGQKLFNMLRLGKSEPWTALENNVGAKN  
 MNVRPLLNYFEPLFTWLKDQNKNSFVGWSTDWSPYADQSIKVRISLKSALGDKAYE  
 WNDNEMYLFRSSVAYAMRQYFLKVKNQMILFGCEEDVRVANLKPRIFFNFVTAPKN  
 VSDIIPRTEVEKAIRMSR

**Purity** > 80% as determined by SDS-PAGE

**Storage** Stored and shipped at -80 centigrade

**Storage Buffer** 50 mM Tris, 250 mM NaCl, pH 8.0

## GENE INFORMATION

**Gene Name** ACE2 angiotensin I converting enzyme (peptidyl-dipeptidase A) 2 [ Homo sapiens ]

**Official Symbol** ACE2

**Synonyms** ACE2; angiotensin I converting enzyme (peptidyl-dipeptidase A) 2; angiotensin-converting enzyme 2; metalloprotease MPROT15; ACE-related carboxypeptidase; angiotensin I converting enzyme 2; angiotensin-converting enzyme homolog; ACEH

**Gene ID** 59272

 Tel: 1-631-559-9269 1-516-512-3133

 Email: [info@creative-biomart.com](mailto:info@creative-biomart.com)  Fax: 1-631-938-8127

 45-1 Ramsey Road, Shirley, NY 11967, USA

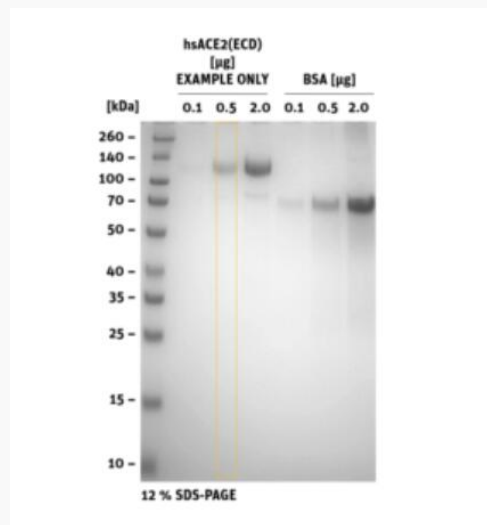
mRNA Refseq [NM\\_021804](#)

Protein Refseq [NP\\_068576](#)

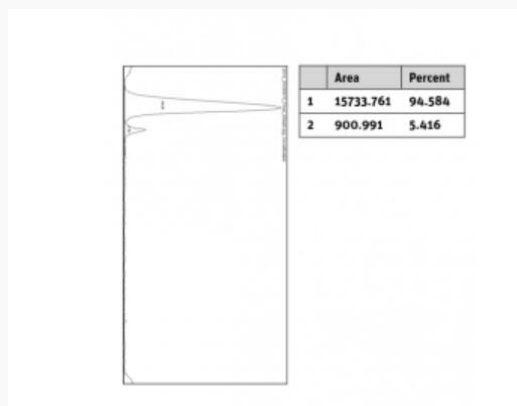
MIM [300335](#)

UniProt ID [Q9BYF1](#)

**SDS-PAGE**



**Histogram of marked  
lane in gel picture**



Tel: 1-631-559-9269 1-516-512-3133

Email: [info@creative-biomart.com](mailto:info@creative-biomart.com) Fax: 1-631-938-8127

45-1 Ramsey Road, Shirley, NY 11967, USA