

Recombinant Human ACE2 Protein (Gln18-Ser740), C-Fc tagged, Animal-free, Carrier-free

Cat. No. ACE2-264H **Lot. No.** (See product label)

SPECIFICATION

Product Overview	Recombinant Human ACE2 Protein (Gln18-Ser740) with C-Fc tag was expressed in HEK293 and Animal-free as well as Carrier-free.
Species	Human
Source	HEK293
ProteinLength	Gln18-Ser740
Description	Angiotensin-Converting Enzyme 2 (ACE2) has a function as an enzyme that hydrolysis the angiotensin II into angiotensin which do the effect of anti-oxidation and anti-inflammatory in cardiovascular system through the inhibition of MAPK pathway and TGF β signaling pathway. ACE2 is highly expression in intestines, kidney, and heart. It is also fonud highy expression in patients with lung cancer.
Form	Lyophilized
Molecular Mass	The protein has a calculated MW of 109.67 kDa. The protein migrates as 120-170 kDa under reducing condition (SDS-PAGE analysis).
Endotoxin	< 0.1 EU/ μ g of the protein by the LAL method.
Purity	>98% as determined by SDS-PAGE analysis.

 Tel: 1-631-559-9269 1-516-512-3133

 Email: info@creative-biomart.com  Fax: 1-631-938-8127

 45-1 Ramsey Road, Shirley, NY 11967, USA

Storage	<p>This product is stable after storage at:</p> <p>-20 centigrade for 12 months in lyophilized state from date of receipt.</p> <p>-20 or -80 centigrade for 1 month under sterile conditions after reconstitution.</p> <p>Avoid repeated freeze/thaw cycles.</p>
Storage Buffer	Lyophilized from a 0.2 µm filtered solution of PBS, pH 7.4.
Reconstitution	It is recommended to reconstitute the lyophilized protein in sterile H ₂ O to a concentration not less than 200 µg/mL and incubate the stock solution for at least 20 min to ensure sufficient re-dissolved.
Shipping	The product is shipped with polar packs. Upon receipt, store it immediately at -20 centigrade or lower for long term storage.

GENE INFORMATION

Gene Name	ACE2 angiotensin I converting enzyme (peptidyl-dipeptidase A) 2 [Homo sapiens (human)]
Official Symbol	ACE2
Synonyms	ACE2; angiotensin I converting enzyme (peptidyl-dipeptidase A) 2; angiotensin-converting enzyme 2; metalloprotease MPROT15; ACE-related carboxypeptidase; angiotensin I converting enzyme 2; angiotensin-converting enzyme homolog; ACEH;
Gene ID	59272
mRNA Refseq	NM_021804
Protein Refseq	NP_068576

 Tel: 1-631-559-9269 1-516-512-3133

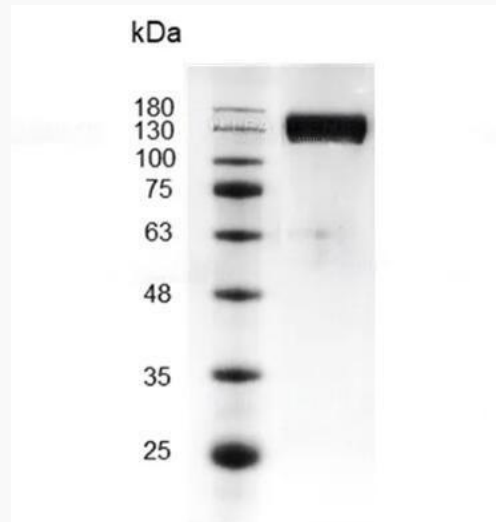
 Email: info@creative-biomart.com  Fax: 1-631-938-8127

 45-1 Ramsey Road, Shirley, NY 11967, USA

MIM 300335

UniProt ID Q9BYF1

**SDS-PAGE analysis
of recombinant
human ACE2.**



 Tel: 1-631-559-9269 1-516-512-3133

 Email: info@creative-biomart.com  Fax: 1-631-938-8127

 45-1 Ramsey Road, Shirley, NY 11967, USA