

Recombinant Human ACE2 protein, His-Avi-tagged, Biotinylated

Cat. No. ACE2-2881H **Lot. No.** (See product label)

SPECIFICATION

Product Overview	Biotinylated Recombinant Human ACE2 protein(Q9BYF1-1)(Gln18-Ser740) is expressed from HEK293 with His tag and Avi tag at the C-Terminus.
Species	Human
Source	HEK293
ProteinLength	Gln18-Ser740
Tag	C-His-Avi
Conjugation/Label	Biotin
Form	Lyophilized from 0.22µm filtered solution in PBS (pH 7.4). Normally 8% trehalose is added as protectant before lyophilization.
Bio-activity	Immobilized SARS-COV-2 Spike RBD, His Tag at 2µg/ml (100µl/well) on the plate. Dose response curve for Biotinylated Human ACE2, His Tag with the EC50 of 0.11µg/ml determined by ELISA.
Molecular Mass	The protein has a predicted MW of 86.5 kDa. Due to glycosylation, the protein migrates to 95-110 kDa based on Bis-Tris PAGE result.
Endotoxin	Less than 1EU per µg by the LAL method.

 Tel: 1-631-559-9269 1-516-512-3133

 Email: info@creative-biomart.com  Fax: 1-631-938-8127

 45-1 Ramsey Road, Shirley, NY 11967, USA

Purity	> 95% as determined by Bis-Tris PAGE > 95% as determined by HPLC
Storage	-20 to -80°C for 12 months as supplied from date of receipt. -80°C for 3-6 months after reconstitution. 2-8°C for 2-7 days after reconstitution. Recommend to aliquot the protein into smaller quantities for optimal storage. Please minimize freeze-thaw cycles.
Reconstitution	Centrifuge the tube before opening. Reconstituting to a concentration more than 100 µg/ml is recommended. Dissolve the lyophilized protein in distilled water.
GeneID	59272
Conjugation	Biotin

GENE INFORMATION

Gene Name	ACE2 angiotensin I converting enzyme (peptidyl-dipeptidase A) 2 [Homo sapiens]
Official Symbol	ACE2
Synonyms	ACE2; angiotensin I converting enzyme (peptidyl-dipeptidase A) 2; angiotensin-converting enzyme 2; metalloprotease MPROT15; ACE-related carboxypeptidase; angiotensin I converting enzyme 2; angiotensin-converting enzyme homolog; ACEH;
mRNA Refseq	NM_021804
Protein Refseq	NP_068576
MIM	300335

 Tel: 1-631-559-9269 1-516-512-3133

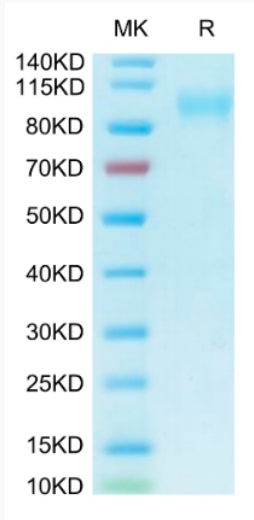
 Email: info@creative-biomart.com  Fax: 1-631-938-8127

 45-1 Ramsey Road, Shirley, NY 11967, USA

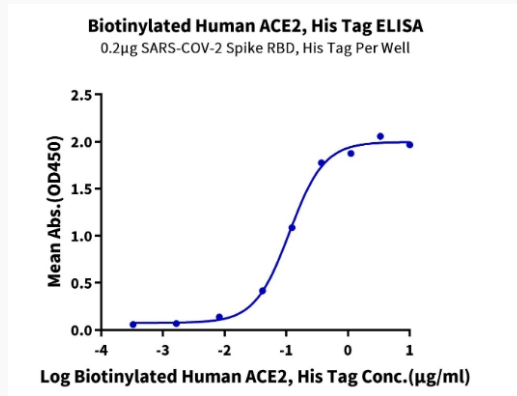
UniProt ID

Q9BYF1

SDS-PAGE



ELISA



Tel: 1-631-559-9269 1-516-512-3133

Email: info@creative-biomart.com Fax: 1-631-938-8127

45-1 Ramsey Road, Shirley, NY 11967, USA