

Recombinant Human ACE2 Protein, His-tagged

Cat. No. ACE2-40H Lot. No. (See product label)

SPECIFICATION

Product Overview	Recombinant Human ACE2 protein(Gln18-Ser740), fused with N-terminal His tag, was expressed in E. coli.
Species	Human
Source	E.coli
ProteinLength	Gln18-Ser740
Tag	N-His
Form	Liquid in sterile PBS, pH7.4, 10% Glycerol, 8% Trehalose.
Molecular Mass	The protein has a calculated MW of 87 kDa.
Endotoxin	<1.0EU per 1µg (determined by the LAL method).
Purity	> 85 % as determined by SDS-PAGE.
Storage	Store it under sterile conditions at -80°C. It is recommended that the protein be aliquoted for optimal storage. Avoid repeated freeze-thaw cycles.
Concentration	1.0 mg/ml.
Reconstitution	Centrifuge the vial at 4°C before opening to recover the entire contents.

 Tel: 1-631-559-9269 1-516-512-3133

 Email: info@creative-biomart.com  Fax: 1-631-938-8127

 45-1 Ramsey Road, Shirley, NY 11967, USA

AA Sequence

MGSSHHHHHHHHSSGLVPRGSHMASMTGGQQMGRGSQSSTIEEQAKTFLDKFN
 HEADLFYQSSSLASWNYNTNITEENVQNMNAGDKWSAFLKEQSTLAQMYPLQEIQ
 NLTVKLQLQALQQNGSSVLSEDKSKRLNTILNTMSTIYSTGKVCNPDNPQECLLLEP
 GLNEIMANSLDYNERLWAWESWRSEV GKQLRPLYEEYVVLKNEMARANHYEDYGD
 YWRGDYEVNGVDGYDYSRGQLIEDVEHTFEEIKPLYEHLHAYVRAKLMNAYPSYISP
 IGCLPAHLLGDMWGRFWTNLYSLTVPFQKPNIDVTDAMVDQAWDAQRIFKEAEKF
 FVSVGLPNMTQGFWENSMLTDPGNVQKAVCHPTAWDLGKGDFRILMCTKVTMDDF
 LTAHHEMGHIQYDMAYAAQPFLLRNGANEGFHEAVGEIMSLSAATPKHLKSIGLLSP
 DFQEDNETEINFLKQALTIVGTL PFTYMLEKWRWMVFKGEIPKDQWMKKWWEMK
 REIVGVVEPVPHDETYCDPASLFHVSNDYSFIRYYTRTLYQFQFQEALCQAAKHEGP
 LHKCDISNSTEAGQKLFNMLRLGKSEPWTALENVVGAKNMNVRPLLNYFEPLFTW
 LKDQNKNSFVGWSTDWSPYADQSIKVRISLKSALGDKAYEWN DNEMYLFRSSVAYA
 MRQYFLKVKNQMILFGEEDVRVANLKPRISFNFFVTAPKNVSDIIPRTEVEKAIRMSR
 SRINDAFRLNDNSLEFLGIQPTLGPPNQPPVS

GENE INFORMATION

Gene Name [ACE2 angiotensin I converting enzyme \(peptidyl-dipeptidase A\) 2 \[Homo sapiens \]](#)

Official Symbol [ACE2](#)

Synonyms ACE2; angiotensin I converting enzyme (peptidyl-dipeptidase A) 2; angiotensin-converting enzyme 2; metalloprotease MPROT15; ACE-related carboxypeptidase; angiotensin I converting enzyme 2; angiotensin-converting enzyme homolog; ACEH;

Gene ID [59272](#)

mRNA Refseq [NM_021804](#)

Protein Refseq [NP_068576](#)

 Tel: 1-631-559-9269 1-516-512-3133

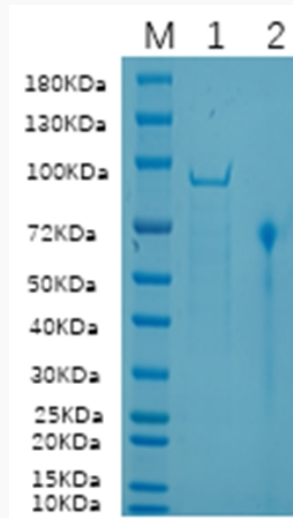
 Email: info@creative-biomart.com  Fax: 1-631-938-8127

 45-1 Ramsey Road, Shirley, NY 11967, USA

MIM 300335

UniProt ID Q9BYF1

SDS-PAGE



 Tel: 1-631-559-9269 1-516-512-3133

 Email: info@creative-biomart.com  Fax: 1-631-938-8127

 45-1 Ramsey Road, Shirley, NY 11967, USA