

Active Recombinant Human ACE2 Protein, Fc-tagged

Cat. No. ACE2-601H **Lot. No.** (See product label)

SPECIFICATION

Product Overview	Recombinant human angiotensin-converting enzyme 2 (ACE2) extracellular domain (18-615) was expressed in CHO cells using a C-terminal Fc tag.
Species	Human
Source	CHO
ProteinLength	18-615
Description	The protein encoded by this gene belongs to the angiotensin-converting enzyme family of dipeptidyl carboxydipeptidases and has considerable homology to human angiotensin 1 converting enzyme. This secreted protein catalyzes the cleavage of angiotensin I into angiotensin 1-9, and angiotensin II into the vasodilator angiotensin 1-7. ACE2 is known to be expressed in various human organs, and its organ- and cell-specific expression suggests that it may play a role in the regulation of cardiovascular and renal function, as well as fertility. In addition, the encoded protein is a functional receptor for the spike glycoprotein of the human coronavirus HCoV-NL63 and the human severe acute respiratory syndrome coronaviruses, SARS-CoV and SARS-CoV-2, the latter is the causative agent of coronavirus disease-2019 (COVID-19). Multiple splice variants have been found for this gene and the dACE2 (or MIRb-ACE2) splice variant has been found to be interferon inducible.
Bio-activity	Measured by its binding ability in a functional ELISA. Immobilized 2019-nCoV spike protein RBD (His tag) at 2µg/mL (100 µL/well) can bind to human ACE2 (19-740)

 Tel: 1-631-559-9269 1-516-512-3133

 Email: info@creative-biomart.com  Fax: 1-631-938-8127

 45-1 Ramsey Road, Shirley, NY 11967, USA



	protein (Fc tag).
Molecular Mass	~150 kDa
Purity	>95 %
Stability	One year at -70 centigrade from date of shipment.
Storage	Store product at -70 centigrade. For optimal storage, aliquot targets into smaller quantities after centrifugation and store at the recommended temperature. For most favorable performance, avoid repeated handling and multiple freeze/thaw cycles.
Concentration	0.2 µg/µL
Storage Buffer	Recombinant protein stored in 50mM Tris-HCl, pH 7.5, 90mM glycine.
Shipping	On dry ice.

GENE INFORMATION

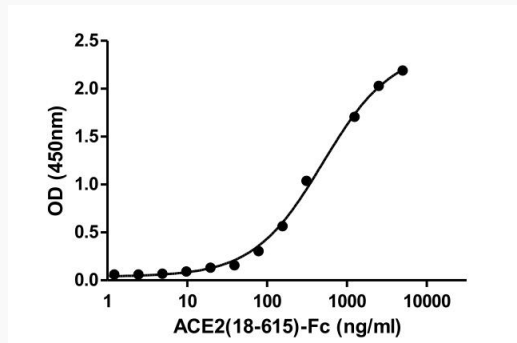
Gene Name	ACE2 angiotensin converting enzyme 2 [Homo sapiens (human)]
Official Symbol	ACE2
Synonyms	ACE2; angiotensin converting enzyme 2; ACEH; angiotensin-converting enzyme 2; ACE-related carboxypeptidase; angiotensin I converting enzyme (peptidyl-dipeptidase A) 2; angiotensin I converting enzyme 2; angiotensin-converting enzyme homolog; angiotensin-converting enzyme-related carboxypeptidase; metalloprotease MPROT15; peptidyl-dipeptidase A; truncated angiotensin converting enzyme 2; EC 3.4.17.23

Tel: 1-631-559-9269 1-516-512-3133

Email: info@creative-biomart.com Fax: 1-631-938-8127

45-1 Ramsey Road, Shirley, NY 11967, USA

Gene ID	59272
mRNA Refseq	NM_021804
Protein Refseq	NP_068576
MIM	300335
UniProt ID	Q9BYF1

Activity


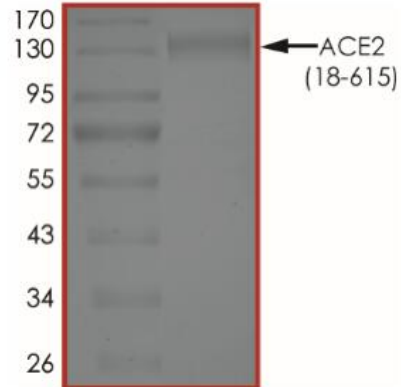
Measured by its binding ability in a functional ELISA. Immobilized 2019-nCoV spike protein RBD (His tag) at 2 μ g/mL (100 μ L/well) can bind to human ACE2 (19-740) protein (Fc tag).

 Tel: 1-631-559-9269 1-516-512-3133

 Email: info@creative-biomart.com  Fax: 1-631-938-8127

 45-1 Ramsey Road, Shirley, NY 11967, USA

Purity



The purity of ACE2 was determined to be >95% by densitometry, approx. MW ~130 kDa.

 Tel: 1-631-559-9269 1-516-512-3133

 Email: info@creative-biomart.com  Fax: 1-631-938-8127

 45-1 Ramsey Road, Shirley, NY 11967, USA