

Active Recombinant Dog ACE2 Protein, Fc-tagged

Cat. No. ACE2-602D Lot. No. (See product label)

SPECIFICATION

Product Overview	Recombinant Dog ACE2 Protein (18-739) was expressed in CHO cells using a C-terminal Fc tag.
Species	Dog
Source	CHO
ProteinLength	18-739
Description	<p>The protein encoded by this gene belongs to the angiotensin-converting enzyme family of dipeptidyl carboxydipeptidases and has considerable homology to human angiotensin 1 converting enzyme. This secreted protein catalyzes the cleavage of angiotensin I into angiotensin 1-9, and angiotensin II into the vasodilator angiotensin 1-7. ACE2 is known to be expressed in various human organs, and its organ- and cell-specific expression suggests that it may play a role in the regulation of cardiovascular and renal function, as well as fertility. In addition, the encoded protein is a functional receptor for the spike glycoprotein of the human coronavirus HCoV-NL63 and the human severe acute respiratory syndrome coronaviruses, SARS-CoV and SARS-CoV-2, the latter is the causative agent of coronavirus disease-2019 (COVID-19). Multiple splice variants have been found for this gene and the dACE2 (or MIRb-ACE2) splice variant has been found to be interferon inducible.</p>
Bio-activity	Binding ability measured in a functional ELISA. Unlike human ACE2, Dog ACE2(18-739) Protein dose not bind well to immobilized 2019-nCoV Spike Protein RBD.

 Tel: 1-631-559-9269 1-516-512-3133

 Email: info@creative-biomart.com  Fax: 1-631-938-8127

 45-1 Ramsey Road, Shirley, NY 11967, USA

Molecular Mass	~150 kDa
Purity	>90 %
Stability	One year at -70 centigrade from date of shipment.
Storage	Store product at -70 centigrade. For optimal storage, aliquot targets into smaller quantities after centrifugation and store at the recommended temperature. For most favorable performance, avoid repeated handling and multiple freeze/thaw cycles.
Concentration	1.0 µg/µL
Storage Buffer	Recombinant protein stored in 50mM Tris-HCl, pH 7.5, 90mM glycine.
Shipping	On dry ice.

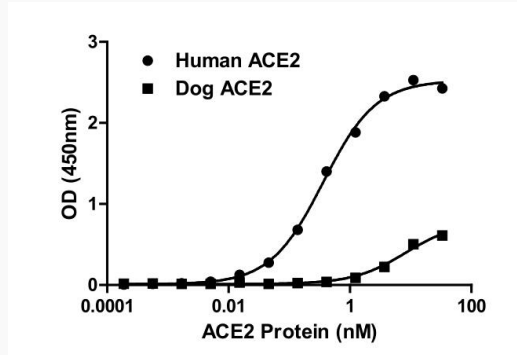
GENE INFORMATION

Gene Name	ACE2 angiotensin converting enzyme 2 [<i>Canis lupus familiaris</i> (dog)]
Official Symbol	ACE2
Synonyms	ACE2; angiotensin converting enzyme 2; angiotensin-converting enzyme 2; angiotensin I converting enzyme (peptidyl-dipeptidase A) 2; angiotensin I converting enzyme 2; EC 3.4.17.23
Gene ID	480847
mRNA Refseq	NM_001165260
Protein Refseq	NP_001158732

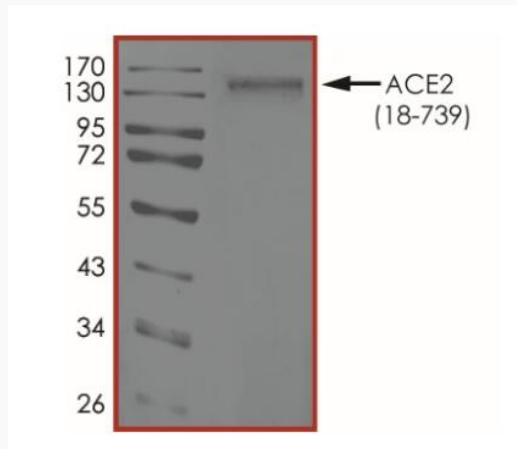
 Tel: 1-631-559-9269 1-516-512-3133

 Email: info@creative-biomart.com  Fax: 1-631-938-8127

 45-1 Ramsey Road, Shirley, NY 11967, USA

UniProt ID
C7ECV0
Activity


Binding ability measured in a functional ELISA. Unlike human ACE2, Dog ACE2(18-739) Protein dose not bind well to immobilized 2019-nCoV Spike Protein RBD.

Purity


The purity of Dog ACE2 (18-739) Protein was determined to be >90% by densitometry, approx. MW 150 kDa.

 Tel: 1-631-559-9269 1-516-512-3133

 Email: info@creative-biomart.com  Fax: 1-631-938-8127

 45-1 Ramsey Road, Shirley, NY 11967, USA